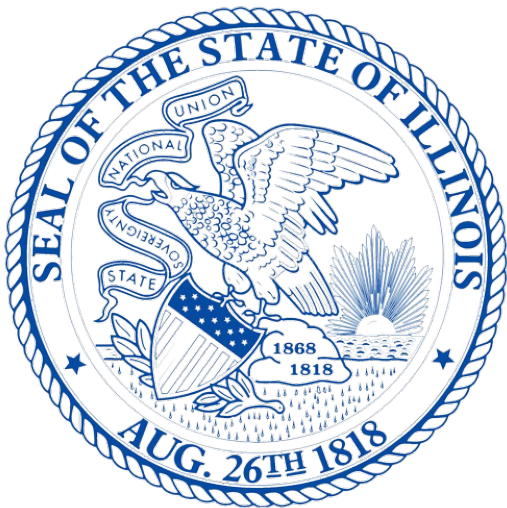




2025

# Affirmative Action Plan



ILLINOIS DEPARTMENT OF  
 **Human Rights**

Promoting Fairness and Equality

[dhr.illinois.gov](http://dhr.illinois.gov)



# **ILLINOIS DEPARTMENT OF HUMAN RIGHTS**

Fiscal Year 2025

Affirmative Action Plan

**James L. Bennett**  
**Director**

## **Introduction**

The Illinois Human Rights Act authorizes the Department of Human Rights to issue guidelines for the development and implementation of affirmative action plans by state executive agencies and to approve such plans. These guidelines apply to the state executive departments, boards, commissions, and instrumentalities of Illinois state government.

This Affirmative Action Plan is a detailed and results-oriented set of procedures arising from an in-depth review of all aspects of the agency's employment process, which should impact equal employment opportunities for minorities, women, and people with disabilities. Each fiscal year, a state executive agency's affirmative action plan must adhere to the format, content, and procedures outlined by the Department of Human Rights.

Herein is the approved Affirmative Action Plan for the Illinois Department of Human Rights.

# Table of Contents

<b>PART I</b>	5
Equal Employment Opportunity/Affirmative Action Program Certification	5
Director's Policy Statement on EEO/AA	6
Agency Profile	7
Identification of the Individual Designated as Responsible to the Chief Executive for IDHR	
EEO/AA Functions	9
Methods of Dissemination of the Affirmative Action Plan and Policy	11
Organizational Chart of IDHR's EEO Network	12
<b>PART II</b>	13
Grouping of IDHR Job Titles by EEO Job Categories	13
Internal Workforce Analysis	14
IDHR Employees by Race	14
IDHR Employees by Race and Sex: Male	14
IDHR Employees by Race and Sex: Female	14
IDHR Employees with Disabilities	15
Promotable Categories	16
Listing of Illinois Counties by Region	17
State Regional Map for IDHR	18
Workforce Analysis by Region	19
Region 1	19
Region 7	20
Region 10	21
Summary of Workforce Analysis by Region – All Regions	22
Workforce Transactions Report by EEO Category	23
Officials/Administrators	23
Professionals	24
Technicians	25
Paraprofessionals	26
Administrative Support	27
Summary of Workforce Transactions Report by EEO Category – All Categories	28
Underutilization Summary by Region	29
Utilization Analysis – Region 1	30
Women	30
Black and African American	30
Hispanic or Latino	31
Asian	31
American Indian or Alaskan Native	32
Native Hawaiian or Other Pacific Islander	32
Availability Percent Worksheet – Region 1	33
Officials/Administrators	33
Professionals	35
Technicians	37
Paraprofessionals	39
Administrative Support	41
Availability Percent Worksheet – Region 7	43

Officials/Administrators -----	43
Professionals -----	45
Technicians -----	47
Paraprofessionals -----	49
Administrative Support -----	51
<b><u>PART III</u></b> -----	53
Numerical Goals and Timetables -----	53
Programmatic Goals -----	54
<b><u>PART IV</u></b> -----	55
Discrimination Complaint Reporting -----	55
Discrimination Complaint Investigation Procedure -----	56
Director’s Policy Statement on Sexual Harassment -----	58
Policy and Procedure on Sexual Harassment Discrimination -----	59
Discrimination Complaint Form -----	64
<b><u>PART V</u></b> -----	66
Designation of IDHR Americans with Disabilities Act Coordinator -----	66
Affirmative Action Provisions for People with Disabilities -----	67
I. Number of Employees with Disabilities -----	67
II. Pre-employment Inquiries/Physical Examinations -----	68
III. Employment Criteria and Testing -----	68
Physical Access (ADA Compliance) -----	69
Labor Force Analysis for People with Disabilities -----	69
Director’s Policy Statement on Reasonable Accommodation -----	70
Reasonable Accommodation Policy -----	71
Accommodation Request Procedures for Applicants -----	78
<b><u>PART VI</u></b> -----	79
List of Applicable EEO Laws -----	79
Description of Applicable EEO Laws -----	79
<b><u>PART VII</u></b> -----	82
Hiring Monitor Form -----	82
Promotion Monitor Form -----	83
Exit Questionnaire -----	84

# PART I

## Equal Employment Opportunity/Affirmative Action Program Certification

AGENCY:	<u>Illinois Department of Human Rights</u>
ADDRESS:	<u>555 W. Monroe Street, 7th Flr.</u>
TELEPHONE NUMBER:	<u>(312) 814-6200</u>
CHIEF EXECUTIVE OFFICER:	<u>James L. Bennett, Director</u>
EEO/AA OFFICER:	<u>Martin Duncan</u>

This is to certify that the attached document represents the Equal Employment Opportunity/Affirmative Action Program of this agency.



James L. Bennett, Director  
Dated: 9/3/2024



Martin Duncan, EEO/AA Officer  
Dated: 9/3/2024

# Director's Policy Statement on EEO/AA

It is the Policy of the Illinois Department of Human Rights to provide equal employment opportunity and to vigorously pursue affirmative action efforts in instances of underutilization. The Department will fully comply with all non-discrimination and affirmative action requirements of state and federal laws, rules, regulations, and executive orders.

In furtherance of this policy, the following agency policies are hereby reaffirmed:

1. Decisions regarding recruitment, hiring, training, promotion, renewal of employment, layoffs, tenure or terms, privileges or conditions of employment, discipline and discharge will be made without regard to race, color, sex, sexual orientation/transgender status, religion, marital/parental status, age, national origin/ancestry, military status, unfavorable discharge from military service, citizenship status, physical or mental disability, political affiliation and/or beliefs, pregnancy, order of protection status or any other non-merit status.
2. The agency is committed to advancing a culture of diversity, equity, inclusion, and accessibility by creating and maintaining an environment in which individual differences are valued, diverse viewpoints are considered, and contributions of all the agency's workforce are recognized; and instituting programs that recognize the value of diverse voices.
3. The agency is committed to meaningful action to institute the principles of diversity, equity, inclusion, and accessibility through identifying and addressing bias, discrimination, and microaggressions when they occur.
4. It is the responsibility of the Department's EEO/AA Officer to monitor the agency's employment status and personnel transactions, and to advise me as to whether or not the agency is in compliance with this policy.
5. Employees shall not discriminate, harass in any manner, or cause intentional harm or disrespect to any fellow employee.
6. Reasonable accommodation will be provided to applicants and employees with disabilities unless such accommodation would cause the agency to experience undue hardship.
7. Affirmative action will be taken to correct the underutilization of minorities, females and people with disabilities at all levels of employment.
8. It is the responsibility of each individual employee to refrain from sexual harassment in the workplace. No employee should be subjected to unsolicited or unwelcome sexual overtures or conduct in the workplace. Furthermore, it is the responsibility of all supervisors to make sure that the work environment is free from sexual harassment.
9. Any employee or applicant who feels that he/she has been discriminated against, should feel free, absent fear of retaliation, to file a discrimination complaint with the agency's EEO Officer, Martin Duncan.
10. The support of all executive, managerial, and supervisory staff in implementing this policy and ensuring compliance with non-discrimination and affirmative action laws and policies in this agency is expected. All employees are directed to fully comply with the provisions of this policy.

The failure to comply with the provisions of this policy may result in disciplinary action up to and including discharge.



James L. Bennett, Director



## Agency Profile

The Department of Human Rights administers the Illinois Human Rights Act, which prohibits discrimination because of race, color, religion, sex, pregnancy, sexual orientation, national origin, ancestry, citizenship status, work authorization status, language, conviction record (with regard to employment), familial status, source of income and immigration status (with regard to real estate transactions), age, marital status, physical or mental disability, order of protection status, military service (which includes veteran status), or unfavorable military discharge.

The Act prohibits discrimination in connection with employment opportunities, real estate transactions, access to financial credit, and the availability of public services and public accommodations. It also provides protection from sexual harassment in employment, sexual harassment of students in education, and retaliation for having filed a discrimination charge.

### **Organizational Structure**

The Department is organized into six divisions consisting of the Director's Office, the Deputy Director's Office, the Chief of Staff's Office, , Legal, and the Institute for Training and Development with additional offices and programs under each one.

The Director's Office includes the following program areas: Legislative Affairs, the Public Information Office, and Internal Auditing.

Organizationally, the Chief of Staff's Office consists of the following program areas: Fiscal, which includes the Public Contracts Unit, , Management Operations, Human Resources, and Labor Relations.

The Charge Processing Division is within the Deputy Director's Office and receives and investigates charges of discrimination in connection with employment opportunities, access to financial credit, or the availability of public services and public accommodations, sexual harassment in employment, sexual harassment of students in education, and retaliation for having opposed discrimination. The Charge Processing Division is the largest division in the Department, consisting of the Intake unit, Investigation groups, Mediation unit and Case Disposition unit.

The Fair Housing Division receives and investigates charges of discrimination with housing and real estate transactions. The Fair Housing Division consists of the Intake unit and Investigation groups.

The Legal Division oversees the investigation works of the Department and monitors the Liaison unit.

The Institute for Training and Development provides a broad range of workshops and trainings in the areas of equal employment opportunity and fair housing, to enhance the sensitivity and technical knowledge of human rights for public and private organizations, municipal agencies, and the business sector.

### **Mission Statement**

To secure for all individuals within the State of Illinois freedom from unlawful discrimination, and to establish and promote equal opportunity and affirmative action as a policy of the state for all its residents.

### **Vision Statement**

We, the employees of the Illinois Department of Human Rights, believe that everyone has an inalienable right to live free from discrimination of any kind, in every aspect of life. We are dedicated to delivering quality service to the people of Illinois with integrity, honesty and respect.

# Core Values

IDHR has intensified its focus around four core values:

## NEUTRALITY

*Driven by evidence.*

We are fair and impartial in our interaction and in the investigation of discrimination allegations.

## COMMUNICATION

*Two-way communication promotes trust.*

We communicate honestly, frequently, and in a timely manner to ensure internal and external stakeholders have the information they need when they need it.

## EFFICIENCY

*Encouraging innovation to promote efficiency.*

We maximize IDHR's and our stakeholders' time and resources in new, innovative, and effective ways to ensure greater levels of success in implementing the agency's mission.

## HIGH MORALE

*Valuing one another.*

We work together to build a culture of engagement in a workplace where we all contribute to our fullest potential.

### IDHR Office Locations

#### Chicago Office

555 W. Monroe Street  
7th Floor  
Chicago, IL 60661  
(312) 814-6200  
(866) 740-3953 (TTY)

#### Springfield Office

524 S. Second Street  
Suite 300  
Springfield, IL 62701  
(217) 785-5100  
(866) 740-3953 (TTY)

#### Marion Office

2309 W. Main Street  
Suite 112  
Marion, IL 62959  
(618) 993-7463  
(866) 740-3953 (TTY)

## Identification of the Individual Designated as Responsible to the Chief Executive for IDHR EEO/AA Functions

The individual assigned the responsibility of discharging the EEO/AA functions for the Illinois Department of Human Rights is Martin Duncan, 555 W. Monroe St., 7th Flr., Chicago, IL 60661, 312.814.6204. EEO/AA responsibilities include but are not limited to the following:

1. Develop EEO/AA policy statement for approval by the IDHR Director.
2. Develop the agency's Affirmative Action Plan, goals and objectives for the Director's approval.
3. Develop internal audits and reporting systems for measuring the effectiveness of agency programs indicating need for remedial action and determining the degree to which the agency's goals and objectives have been obtained.
4. Provide assistance to executive/management staff in identifying and finding solutions to EEO problems.
5. Serve as liaison between the agency and EEO enforcement authorities.
6. Provide assistance to the ADA Coordinator for internal employees.
7. Conduct internal reviews periodically of IDHR operations to ensure that it is in compliance with the mandate of this plan.
8. Make quarterly reports to the agency's Director regarding the status of the agency with respect to meeting its goals and objectives.
9. Evaluate employment policies and practices and report immediately to the Director any such policies, practices and evaluation mechanisms that have adverse impact on minorities, women and persons with disabilities.
10. Inform management of new developments related to EEO.
11. Regularly confer with managers and supervisors to assure that the agency's EEO policies are being observed.
12. Report to the Director all internal complaints of discrimination against the agency.
13. Investigates internal complaints of discrimination and participate in the investigation of external charges of discrimination.
14. Analyze Layoff reports, Reorganization reports, Hiring and Promotion monitors and Exit Interview Questionnaires.

15. Provide counseling for any aggrieved employee or applicant for employment who believes that he or she has been discriminated against because of race, sex, sexual orientation, creed, religion, color, marital or parental status, age, national origin, ancestry, political affiliation and/or beliefs, mental and/or physical disability, military status, citizenship status, or other non-merit factors.
16. Immediately notify the Director and Liaison staff when unable to resolve employment practices or conditions, which have or tend to have disparate impact on minorities, women, or people with disabilities.
17. Develop methods by which to disseminate the agency's Affirmative Action Plan.

## **Methods of Dissemination of the Affirmative Action Plan and Policy**

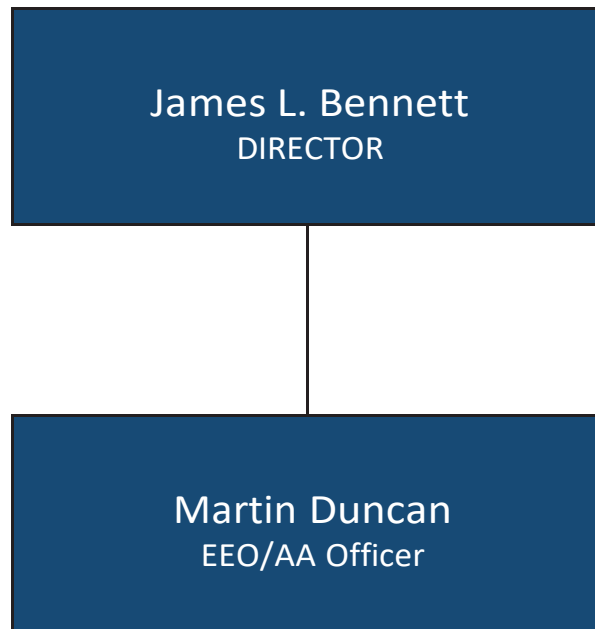
### **I. Internal**

- (1) A copy of the Affirmative Action Plan will be available for review in the Marion, Springfield and Chicago offices;
- (2) A Copy of the Plan will be made available to all agency managers, supervisory personnel and staff;
- (3) Original copy of the Plan will be submitted to the Liaison Unit;
- (4) Copies of the Director's Policy Statement will be posted in strategic areas throughout the agency.
- (5) Display EEO/AA Posters in conspicuous locations.

### **II. External**

- (1) Copies of the agency's Affirmative Action Plan will be sent to the State Library, Acquisitions Division, and Illinois Document Division;
- (2) A copy of the Plan will be available to all recruitment sources, minority/female organizations, state and federal regulatory agencies, etc.
- (3) A copy will be available on the department's website.

## Organizational Chart of IDHR's EEO Network



# PART II

## **Grouping of IDHR Job Titles by EEO Job Categories**

### **OFFICIALS/ADMINISTRATORS (001):**

1. Senior Public Service Administrator
2. Public Service Administrator

### **PROFESSIONALS (002):**

1. Accountant
2. Accountant Supervisor
3. Administrative Assistant I, II
4. Human Resources Representative
5. Human Rights Investigator I, II & III
6. Human Rights Investigator Trainee
7. Human Rights Mediator
8. Human Rights Specialist I, III
9. Technical Advisor II, III
10. Public Administrator Intern

### **TECHNICIANS (003):**

1. Account Technician II
2. Data Processing Specialist
3. Data Processing Supervisor I
4. Data Processing Technician
5. Information Services Specialist II
6. Information Systems Analyst I

### **PARAPROFESSIONALS (005):**

1. Executive Secretary I, II, III
2. Office Coordinator
3. Private Secretary II

### **ADMINISTRATIVE SUPPORT (006):**

1. Office Assistant
2. Office Associate
3. Office Aide

## Internal Workforce Analysis

The Illinois Department of Human Rights has 127 employees in two offices around the state, Chicago and , Springfield. The largest office is Chicago, with 111 employees and the Springfield office has 16 employees. Overall, the agency is diverse. As the charts below show, 62% of the staff is female, 32% African American, and almost 32% Latino. Thirty-five percent of the staff has disabilities and four percent of the staff is Asian. The Department does not have any Native American or Hawaiian/Pacific staff members. The following figures are as of June 30, 2024.

### **IDHR Employees by Race**

<b>White</b>	<b>African American</b>	<b>Latino</b>	<b>Asian</b>	<b>Native American</b>	<b>Hawaiian Pacific</b>
42	40	40	5	0	0
33.07%	31.50%	31.50%	3.94%	0%	0%

### **IDHR Employees by Race and Sex: Male**

<b>White</b>	<b>African American</b>	<b>Latino</b>	<b>Asian</b>	<b>Native American</b>	<b>Hawaiian Pacific</b>	<b>Total</b>
18	12	18	0	0	0	48
14.17%	9.44%	14.17%	0%	0%	0%	37.78%

### **IDHR Employees by Race and Sex: Female**

<b>White</b>	<b>African American</b>	<b>Latino</b>	<b>Asian</b>	<b>Native American</b>	<b>Hawaiian Pacific</b>	<b>Total</b>
24	28	22	5	0	0	79
18.89 %	22.04%	17.32%	3.93%	0%	0%	62.18%



## IDHR Employees with Disabilities

Male	Female	Total
15	29	44
11.81%	22.83%	34.64%

Females are well represented in all levels of employment within the agency. They are: 58.82% of Officials/Administrators; 56.52% of Professionals; 100% of Technicians; 75% of Para- Professionals and 84.21% of Administrative Support. African American employees are well disseminated among the EEO job categories. They are: 35.29% of Officials/Administrators; 26.09% of Professionals; 100% of Technicians; 75% of Paraprofessionals; and 31.58% of Administrative Support. Latinos make up 20.59% of Officials/Administrators; 34.78% of Professionals; and 47.37% of Administrative Support. There are five Asian employees in the agency; four are in the Professional category, the other is in the Administrative Support category.

The Department hired twenty-one (21) individuals in FY24. Of those 21, twelve (12) were females (57%), six (6) were African American (29%), five (5) were Latinos (24%), and six (6) were persons with disabilities (29%). There were eight (8) promotions: four (4) were females (50%), three (3) were Latinos (36%) and there were three (3) African Americans (38%).

In regard to discipline imposed during the year, there were no suspensions issued.

## **Promotable Categories**

### **OFFICIALS/ADMINISTRATORS (001)**

1. Professionals

### **PROFESSIONALS (002)**

1. Technicians
2. Paraprofessionals
3. Administrative Support

### **TECHNICIANS (003)**

1. Paraprofessionals
2. Administrative Support

### **PARAPROFESSIONALS (005)**

1. Administrative Support

### **ADMINISTRATIVE SUPPORT (006)**

1. None

## **Listing of Illinois Counties by Region**

### **REGION 1**

Cook  
DeKalb  
DuPage  
Grundy  
Kane  
Kankakee  
Kendall  
Lake  
McHenry  
Will

### **REGION 2**

Boone  
Ogle  
Stephenson  
Winnebago

### **REGION 3**

Bureau  
Carroll  
Henry  
Jo Daviess  
LaSalle  
Lee  
Mercer  
Putnam  
Rock Island  
Whiteside

### **REGION 4**

Adams  
Brown  
Hancock  
Henderson  
Knox  
McDonough  
Pike  
Schuyler  
Warren

### **REGION 5**

DeWitt  
Fulton  
Livingston  
Marshall  
Mason  
McLean  
Peoria  
Stark  
Tazewell  
Woodford

### **REGION 6**

Champaign  
Douglas  
Ford  
Iroquois  
Piatt  
Vermillion

### **REGION 7**

Christian  
Cass  
Greene  
Logan  
Macon  
Macoupin  
Menard  
Morgan  
Montgomery  
Sangamon  
Scott  
Shelby

### **REGION 8**

Bond  
Calhoun  
Clinton  
Jersey  
Madison  
Monroe  
Randolph  
St. Clair  
Washington

### **REGION 9**

Clark  
Clay  
Coles  
Crawford  
Cumberland  
Edgar  
Effingham  
Fayette  
Jasper  
Lawrence  
Marion  
Moultrie  
Richland

### **REGION 10**

Alexander  
Edwards  
Franklin  
Gallatin  
Hamilton  
Hardin  
Jackson  
Jefferson  
Johnson  
Massac  
Perry  
Pope  
Pulaski  
Saline  
Union  
Wabash  
Wayne  
White  
Williamson

## State Regional Map for IDHR



## Region 1

## Workforce Analysis by Region

Agency: Department of Human Rights

Reporting Period: 4th Quarter of FY2024

Region: 1

EEO Category	Grand Total	MALES										FEMALES										PERCENTAGES									
		Total	W	BIAA	HL	A	AN	OP	NH	PMD	Total	W	BIAA	HL	A	AN	OP	NH	PMD	M	F	W	BIAA	HL	A	AI/AN	WH/PI	PMD			
Offices / Administrators	31	13	5	2	6	0				2	18	7	10	1	0				5	41.94%	58.06%	38.71%	38.71%	22.58%	0.00%	0.00%	0.00%	22.58%			
Professionals	60	27	8	8	11	0				10	33	7	10	13	3				16	45.00%	55.00%	25.00%	30.00%	40.00%	5.00%	0.00%	0.00%	43.33%			
Technicians	1	0	0	0	0	0				0	1	0	1	0	0				0	0.00%	100.00%	0.00%	100.00%	0.00%	0.00%	0.00%	0.00%	0.00%	0.00%		
Protective Service	0	0									0									0.00%		0.00%	0.00%	0.00%	0.00%	0.00%	0.00%	0.00%	0.00%		
Para-professionals	3	1	0	1	0	0				1	2	0	2	0	0				1	33.33%	66.67%	0.00%	100.00%	0.00%	0.00%	0.00%	0.00%	66.67%			
Administrative Support	16	3	1	1	1	0				2	13	2	3	7	1				5	18.75%	81.25%	18.75%	25.00%	50.00%	6.25%	0.00%	0.00%	43.75%			
Skilled Craft	0	0									0									0.00%		0.00%	0.00%	0.00%	0.00%	0.00%	0.00%	0.00%	0.00%		
Service / Maintenance	0	0									0									0.00%		0.00%	0.00%	0.00%	0.00%	0.00%	0.00%	0.00%	0.00%		
TOTAL	111	44	14	12	18	0	0	0	0	15	67	16	26	21	4	0	0	0	27	39.64%	60.36%	27.03%	34.23%	35.14%	3.86%	0.00%	0.00%	37.84%			

Grand Total Employees for Region 1:

**Males:**

4

Female

67

1

Total M

35

1

1

1

1

White:	30	Black/African American:	38	Hispanic/Latino:	38	Asian:	4	ALIAN:	0	NHOPI:	0	PWD:	42
	27.03%		34.23%		35.14%		3.60%		0.00%		0.00%		37.84%

W=White BAA=Black or African American HL=Hispanic or Latino A=Asian AUA=American Indian or Alaskan Native MOP=Native Hawaiian or Other Pacific Islander PWD=People with Disabilities

DHR-9 (Rev. Feb. 2016)

# Workforce Analysis by Region

## Region 7

### Workforce Analysis by Region

Agency: Department of Human Rights

Reporting Period: 4th Quarter of FY2024

Region: 7

EEO Category	Grand Total	MALES										FEMALES										PERCENTAGES									
		Total	W	B/A	H/L	A	N/ NH	OPI	P/W	Total	W	B/A	H/L	A	N/ NH	OPI	P/W	M	F	W	B/A	H/L	A	A/AN	NHOPI	P/W					
Officials / Administrators	3	1	1	0	0	0			0	2	2	0	0	0			1	33.33%	66.67%	100.00%	0.00%	0.00%	0.00%	0.00%	0.00%	0.00%	33.33%				
Professionals	9	3	3	0	0	0			0	6	5	0	0	1			0	33.33%	66.67%	88.89%	0.00%	0.00%	0.00%	0.00%	0.00%	0.00%	0.00%				
Technicians	0	0	0	0	0	0			0	0	0	0	0	0			0	0.00%	0.00%	0.00%	0.00%	0.00%	0.00%	0.00%	0.00%	0.00%	0.00%				
Protective Service	0	0							0									0.00%	0.00%	0.00%	0.00%	0.00%	0.00%	0.00%	0.00%	0.00%	0.00%				
Para-professionals	1	0	0	0	0	0			0	1	1	0	0	0			1	0.00%	100.00%	100.00%	0.00%	0.00%	0.00%	0.00%	0.00%	0.00%	100.00%				
Administrative Support	3	0	0	0	0	0			0	3	0	2	1	0			0	0.00%	100.00%	0.00%	66.67%	33.33%	0.00%	0.00%	0.00%	0.00%	0.00%				
Skilled Craft	0	0							0									0.00%	0.00%	0.00%	0.00%	0.00%	0.00%	0.00%	0.00%	0.00%	0.00%				
Service / Maintenance	0	0							0									0.00%	0.00%	0.00%	0.00%	0.00%	0.00%	0.00%	0.00%	0.00%	0.00%				
TOTAL	16	4	4	0	0	0	0	0	0	12	8	2	1	1	0	0	2	25.00%	75.00%	75.00%	12.50%	6.25%	6.25%	0.00%	0.00%	0.00%	12.50%				

Grand Total Employees for Region 7:		Males: 4		Females: 12		Total Minorities: 4	
White: 12	75.00%	Black/African American: 2	12.50%	Hispanic/Latino: 1	8.25%	Asian: 1	6.25%
				A/AN: 0	0.00%	NHOPI: 0	0.00%
						PWD: 2	12.50%

W=White B/A=Black or African American H/L=Hispanic or Latino A=Asian A/AN=American Indian or Alaskan Native NHOPI=Native Hawaiian or Other Pacific Islander PWD=People with Disabilities  
 Data as of: Feb. 2019

# Workforce Analysis by Region

## Region 10

### Workforce Analysis by Region

Agency: Department of Human Rights

Reporting Period: 4th Quarter of FY2024

Region: 10

Grand	MALES										FEMALES										PERCENTAGES									
	Grand Total		Total	W	B/A	H/L	A	A/N	OPI	PWD	Total		Total	W	B/A	H/L	A	A/N	OPI	PWD	M	F	W	B/A	H/L	A	A/N	NHOP	PWD	
Officials / Administrators	0	0	0	0	0	0	0				0	0	0	0	0	0	0				0.00%	0.00%	0.00%	0.00%	0.00%	0.00%	0.00%	0.00%	0.00%	0.00%
Professionals	0	0	0	0	0	0	0				0	0	0	0	0	0					0.00%	0.00%	0.00%	0.00%	0.00%	0.00%	0.00%	0.00%	0.00%	0.00%
Technicians	0	0	0	0	0	0	0				0	0	0	0	0	0					0.00%	0.00%	0.00%	0.00%	0.00%	0.00%	0.00%	0.00%	0.00%	0.00%
Protective Service	0	0									0										0.00%	0.00%	0.00%	0.00%	0.00%	0.00%	0.00%	0.00%	0.00%	0.00%
Para-professionals	0	0	0	0	0	0	0				0	0	0	0	0	0					0.00%	0.00%	0.00%	0.00%	0.00%	0.00%	0.00%	0.00%	0.00%	0.00%
Administrative Support	0	0	0	0	0	0	0				0	0	0	0	0	0					0.00%	0.00%	0.00%	0.00%	0.00%	0.00%	0.00%	0.00%	0.00%	0.00%
Skilled Craft	0	0									0										0.00%	0.00%	0.00%	0.00%	0.00%	0.00%	0.00%	0.00%	0.00%	0.00%
Service / Maintenance	0	0									0										0.00%	0.00%	0.00%	0.00%	0.00%	0.00%	0.00%	0.00%	0.00%	0.00%
TOTAL	0	0	0	0	0	0	0	0	0	0	0	0	0	0	0	0	0	0	0	0	0.00%	0.00%	0.00%	0.00%	0.00%	0.00%	0.00%	0.00%	0.00%	0.00%

Grand Total Employees for Region 10:										Total Minorities:									
Males:					Females:														
0					0					0									
0.00%					0.00%					0.00%									
White:	0	Black/African American:	0	Hispanic/Latino:	0	Asian:	0	A/AN:	0	NHOP:	0	PWD:	0						
0.00%		0.00%		0.00%		0.00%		0.00%		0.00%		0.00%							

W=White B/A=Black or African American H/L=Hispanic or Latino A=Asian A/N=American Indian or Alaskan Native NHOP=Native Hawaiian or Other Pacific Islander PWD=People with Disabilities  
DH-9 (Rev. Feb. 2016)

# Summary of Workforce Analysis by Region

## All Regions

### Summary of Workforce Analysis by Region

Agency: Department of Human Rights

Reporting Period: 4th Quarter of FY2024

#### Grand Total

EEO Category	Grand Total	MALES								FEMALES								PERCENTAGES								
		Total	W	B/A	H/L	A	AN	OP	PWD	Total	W	B/A	H/L	A	AN	OP	PWD	M	F	W	B/A	H/L	A	AN	NHOP	PWD
Officials / Administrators	34	14	6	2	6				2	20	9	10	1				6	41.18%	58.82%	44.12%	35.29%	20.59%				23.53%
Professionals	69	30	11	8	11				10	39	12	10	13	4			16	43.48%	56.52%	33.33%	26.09%	34.79%	5.80%			37.68%
Technicians	1									1		1							100.00%		100.00%					
Protective Service																										
Para-professionals	4	1		1					1	3	1	2					2	25.00%	75.00%	25.00%	75.00%					75.00%
Administrative Support	19	3	1	1	1				2	16	2	5	8	1			5	15.79%	84.21%	15.79%	31.58%	47.37%	5.28%			36.84%
Skilled Craft																										
Service / Maintenance																										
TOTAL	127	48	18	12	18				15	79	24	28	22	5			29	37.80%	62.20%	33.07%	31.50%	31.50%	3.04%			34.65%

<b>Grand Total Employees:</b>	<b>Males:</b>	<b>48</b>	<b>Females:</b>	<b>79</b>	<b>Total Minorities:</b>	<b>85</b>
		<b>37.80%</b>		<b>62.20%</b>		<b>66.93%</b>
White: 42	Black/African American: 40	Hispanic/Latino: 40	Asian: 5	AI/AN: 5	NHOP: 44	PWD: 44
33.07%	31.50%	31.50%	3.94%			34.65%

W=White B/A=Black or African American H/L=Hispanic or Latino A=Asian AI/AN=American Indian or Alaskan Native NHOP=Native Hawaiian or Other Pacific Islander PWD=People with Disabilities  
 OHR-6 (Rev. Feb 2016)



# Workforce Transactions Report by EEO Category

## Officials/Administrators

### Workforce Transactions Report by EEO Category

Agency: Department of Human Rights

Reporting Period: FY2024

EEO Category: OFFICIALS / ADMINISTRATORS

										MALES										FEMALES										PERCENTAGES									
Transaction	Grand Total		W	B/A	H/L	A	AI	AN	OP	PWD	Total	W	B/A	H/L	A	AI	AN	OP	PWD	M	F		W	B/A	H/L	A	AI	AN	OP	PWD									
New Hires	4	1	1								3	3								25.00%	75.00%	100.00%	0.00%	0.00%	0.00%	0.00%	0.00%	0.00%	0.00%	0.00%									
Promotions	0	0									0									0.00%	0.00%	0.00%	0.00%	0.00%	0.00%	0.00%	0.00%	0.00%	0.00%	0.00%									
Intra-Agency Transfers	0	0									0									0.00%	0.00%	0.00%	0.00%	0.00%	0.00%	0.00%	0.00%	0.00%	0.00%	0.00%									
Suspensions	0	0									0									0.00%	0.00%	0.00%	0.00%	0.00%	0.00%	0.00%	0.00%	0.00%	0.00%	0.00%									
Separations	4	1	1								3	1	1	1					1	25.00%	75.00%	50.00%	25.00%	25.00%	0.00%	0.00%	0.00%	0.00%	0.00%	25.00%									
Discharges	0	0									0									0.00%	0.00%	0.00%	0.00%	0.00%	0.00%	0.00%	0.00%	0.00%	0.00%	0.00%									
Lay Off	0	0									0									0.00%	0.00%	0.00%	0.00%	0.00%	0.00%	0.00%	0.00%	0.00%	0.00%	0.00%									
Demotions	0	0									0									0.00%	0.00%	0.00%	0.00%	0.00%	0.00%	0.00%	0.00%	0.00%	0.00%	0.00%									
Reductions	0	0									0									0.00%	0.00%	0.00%	0.00%	0.00%	0.00%	0.00%	0.00%	0.00%	0.00%	0.00%									
Reinstatements	0	0									0									0.00%	0.00%	0.00%	0.00%	0.00%	0.00%	0.00%	0.00%	0.00%	0.00%	0.00%									
Reemployment	0	0									0									0.00%	0.00%	0.00%	0.00%	0.00%	0.00%	0.00%	0.00%	0.00%	0.00%	0.00%									
Upward Reallocations	0	0									0									0.00%	0.00%	0.00%	0.00%	0.00%	0.00%	0.00%	0.00%	0.00%	0.00%	0.00%									
Downward Reallocations	0	0									0									0.00%	0.00%	0.00%	0.00%	0.00%	0.00%	0.00%	0.00%	0.00%	0.00%	0.00%									

W=White B/A=Black or African American H/L=Hispanic or Latino A=Asian AI/AN=American Indian or Alaskan Native NH=Native Hawaiian or Other Pacific Islander PWD=People with Disabilities  
 DHR-10 (Rev Feb 2016)

# Workforce Transactions Report by EEO Category

## Professionals

### Workforce Transactions Report by EEO Category

Agency: Department of Human Rights

Reporting Period: FY2024

EEO Category: PROFESSIONALS

MALES										FEMALES										PERCENTAGES									
Transaction	Grand Total	Total	W	BAA	H/L	A	AI	NH	PWD	Total	W	BAA	H/L	A	AI	NH	PWD	M	F	W	BAA	H/L	A	AI	NH	PWD			
New Hires	13	7	3	2	2					6	1	2	2	1			3	53.85%	46.15%	30.77%	30.77%	30.77%	7.69%	0.00%	0.00%	23.08%			
Promotions	8	4		2	2				1	4	2	1	1					50.00%	50.00%	25.00%	37.50%	37.50%	0.00%	0.00%	0.00%	12.50%			
Intra-Agency Transfers	0	0								0								0.00%	0.00%	0.00%	0.00%	0.00%	0.00%	0.00%	0.00%	0.00%			
Suspensions	0	0								0								0.00%	0.00%	0.00%	0.00%	0.00%	0.00%	0.00%	0.00%	0.00%			
Separations	6	4	2	2						2		1	1					66.67%	33.33%	33.33%	50.00%	16.67%	0.00%	0.00%	0.00%	0.00%			
Discharges	0	0								0								0.00%	0.00%	0.00%	0.00%	0.00%	0.00%	0.00%	0.00%	0.00%			
Lay Off	0	0								0								0.00%	0.00%	0.00%	0.00%	0.00%	0.00%	0.00%	0.00%	0.00%			
Demotions	0	0								0								0.00%	0.00%	0.00%	0.00%	0.00%	0.00%	0.00%	0.00%	0.00%			
Reductions	1	0								1	1							0.00%	100.00%	100.00%	0.00%	0.00%	0.00%	0.00%	0.00%	0.00%			
Reinstatements	0	0								0								0.00%	0.00%	0.00%	0.00%	0.00%	0.00%	0.00%	0.00%	0.00%			
Reemployment	0	0								0								0.00%	0.00%	0.00%	0.00%	0.00%	0.00%	0.00%	0.00%	0.00%			
Upward Reallocations	0	0								0								0.00%	0.00%	0.00%	0.00%	0.00%	0.00%	0.00%	0.00%	0.00%			
Downward Reallocations	0	0								0								0.00%	0.00%	0.00%	0.00%	0.00%	0.00%	0.00%	0.00%	0.00%			

W=White B/A=Black or African American H/L=Hispanic or Latino A=Asian AI/AN=American Indian or Alaskan Native NHCP=Native Hawaiian or Other Pacific Islander PWD=People with Disabilities

DHR-10 (Rev Feb 2016)

# Workforce Transactions Report by EEO Category

## Technicians

### Workforce Transactions Report by EEO Category

Agency: Department of Human Rights

Reporting Period: FY2024

EEO Category: TECHNICIANS

Transaction	Grand Total	MALES										FEMALES										PERCENTAGES									
		W					B/A					H/L					A					AI					AN				
		W	B/A	H/L	A	PWD	W	B/A	H/L	A	PWD	W	B/A	H/L	A	PWD	W	B/A	H/L	A	PWD	M	F	W	B/A	H/L	A	AI	AN	OP	PWD
New Hires	0	0					0															0.00%	0.00%	0.00%	0.00%	0.00%	0.00%	0.00%	0.00%	0.00%	0.00%
Promotions	0	0					0															0.00%	0.00%	0.00%	0.00%	0.00%	0.00%	0.00%	0.00%	0.00%	0.00%
Intra-Agency Transfers	0	0					0															0.00%	0.00%	0.00%	0.00%	0.00%	0.00%	0.00%	0.00%	0.00%	0.00%
Suspensions	0	0					0															0.00%	0.00%	0.00%	0.00%	0.00%	0.00%	0.00%	0.00%	0.00%	0.00%
Separations	0	0					0															0.00%	0.00%	0.00%	0.00%	0.00%	0.00%	0.00%	0.00%	0.00%	0.00%
Discharges	0	0					0															0.00%	0.00%	0.00%	0.00%	0.00%	0.00%	0.00%	0.00%	0.00%	0.00%
Lay Off	0	0					0															0.00%	0.00%	0.00%	0.00%	0.00%	0.00%	0.00%	0.00%	0.00%	0.00%
Demotions	0	0					0															0.00%	0.00%	0.00%	0.00%	0.00%	0.00%	0.00%	0.00%	0.00%	0.00%
Reductions	0	0					0															0.00%	0.00%	0.00%	0.00%	0.00%	0.00%	0.00%	0.00%	0.00%	0.00%
Reinstatements	0	0					0															0.00%	0.00%	0.00%	0.00%	0.00%	0.00%	0.00%	0.00%	0.00%	0.00%
Reemployment	0	0					0															0.00%	0.00%	0.00%	0.00%	0.00%	0.00%	0.00%	0.00%	0.00%	0.00%
Upward Reallocations	0	0					0															0.00%	0.00%	0.00%	0.00%	0.00%	0.00%	0.00%	0.00%	0.00%	0.00%
Downward Reallocations	0	0					0															0.00%	0.00%	0.00%	0.00%	0.00%	0.00%	0.00%	0.00%	0.00%	0.00%

W=White B/A=Black or African American H/L=Hispanic or Latino A=Asian AI/AN=American Indian or Alaskan Native NH=Native Hawaiian or Other Pacific Islander PWD=People with Disabilities

DHR-10 (Rev. Feb 2016)

# Workforce Transactions Report by EEO Category

## Paraprofessionals

### Workforce Transactions Report by EEO Category

Agency: Department of Human Rights

Reporting Period: FY2024

EEO category: PARAPROFESSIONALS

MALES										FEMALES										PERCENTAGES									
Grand Total		W	B/A	H/L	A	AI AN	NH OPI	PWD	Total	W	B/A	H/L	A	AI AN	NH OPI	PWD	M	F	W	B/A	H/L	A	AI AN	NH OPI	PWD				
New Hires	0	0							0								0.00%	0.00%	0.00%	0.00%	0.00%	0.00%	0.00%	0.00%	0.00%				
Promotions	0	0							0								0.00%	0.00%	0.00%	0.00%	0.00%	0.00%	0.00%	0.00%	0.00%				
Intra-Agency Transfers	0	0							0								0.00%	0.00%	0.00%	0.00%	0.00%	0.00%	0.00%	0.00%	0.00%				
Suspensions	0	0							0								0.00%	0.00%	0.00%	0.00%	0.00%	0.00%	0.00%	0.00%	0.00%				
Separations	1	0							1	1						1	0.00%	100.00%	0.00%	100.00%	0.00%	0.00%	0.00%	0.00%	100.00%				
Discharges	0	0							0								0.00%	0.00%	0.00%	0.00%	0.00%	0.00%	0.00%	0.00%	0.00%				
Lay Off	0	0							0								0.00%	0.00%	0.00%	0.00%	0.00%	0.00%	0.00%	0.00%	0.00%				
Demotions	0	0							0								0.00%	0.00%	0.00%	0.00%	0.00%	0.00%	0.00%	0.00%	0.00%				
Reductions	0	0							0								0.00%	0.00%	0.00%	0.00%	0.00%	0.00%	0.00%	0.00%	0.00%				
Reinstatements	0	0							0								0.00%	0.00%	0.00%	0.00%	0.00%	0.00%	0.00%	0.00%	0.00%				
Reemployment	0	0							0								0.00%	0.00%	0.00%	0.00%	0.00%	0.00%	0.00%	0.00%	0.00%				
Upward Reallocations	0	0							0								0.00%	0.00%	0.00%	0.00%	0.00%	0.00%	0.00%	0.00%	0.00%				
Downward Reallocations	0	0							0								0.00%	0.00%	0.00%	0.00%	0.00%	0.00%	0.00%	0.00%	0.00%				

W=White B/A=Black or African American H/L=Hispanic or Latino A=Asian AI/AN=American Indian or Alaskan Native NH/PI=Native Hawaiian or Other Pacific Islander PWD=People with Disabilities  
DHR-10 (Rev. Feb 2016)

# Workforce Transactions Report by EEO Category

## Administrative Support

### Workforce Transactions Report by EEO Category

Agency: Department of Human Rights

Reporting Period: FY2024

EEO Category: ADMINISTRATIVE SUPPORT

MALES										FEMALES										PERCENTAGES									
Transaction	Grand Total	Total	W	BAA	H/L	A	AI	NH	PWD	Total	W	BAA	H/L	A	AI	NH	PWD	M	F	W	BAA	H/L	A	AI	NH	PWD			
New Hires	4	1	1							3		2	1				1	25.00%	75.00%	25.00%	50.00%	25.00%	0.00%	0.00%	0.00%	25.00%			
Promotions	0	0								0								0.00%	0.00%	0.00%	0.00%	0.00%	0.00%	0.00%	0.00%				
Intra-Agency Transfers	0	0								0								0.00%	0.00%	0.00%	0.00%	0.00%	0.00%	0.00%	0.00%				
Suspensions	0	0								0								0.00%	0.00%	0.00%	0.00%	0.00%	0.00%	0.00%	0.00%				
Separations	3	0								3		2	1					0.00%	100.00%	0.00%	66.67%	33.33%	0.00%	0.00%	0.00%				
Discharges	0	0								0								0.00%	0.00%	0.00%	0.00%	0.00%	0.00%	0.00%	0.00%				
Lay Off	0	0								0								0.00%	0.00%	0.00%	0.00%	0.00%	0.00%	0.00%	0.00%				
Demotions	0	0								0								0.00%	0.00%	0.00%	0.00%	0.00%	0.00%	0.00%	0.00%				
Reductions	0	0								0								0.00%	0.00%	0.00%	0.00%	0.00%	0.00%	0.00%	0.00%				
Reinstatements	0	0								0								0.00%	0.00%	0.00%	0.00%	0.00%	0.00%	0.00%	0.00%				
Reemployment	0	0								0								0.00%	0.00%	0.00%	0.00%	0.00%	0.00%	0.00%	0.00%				
Upward Relocations	0	0								0								0.00%	0.00%	0.00%	0.00%	0.00%	0.00%	0.00%	0.00%				
Downward Relocations	0	0								0								0.00%	0.00%	0.00%	0.00%	0.00%	0.00%	0.00%	0.00%				

W=White BAA=Black or African American H/L=Hispanic or Latino A=Asian AI/AN=American Indian or Alaskan Native NHOP=Native Hawaiian or Other Pacific Islander PWD=People with Disabilities  
DHHR-10 (Rev. Feb 2016)

# Summary of Workforce Transactions Report by EEO Category

## All Categories

### Summary of Workforce Transactions Report by EEO Category

Agency: Department of Human Rights

Reporting Period: FY2024

EEO Category:

Transaction	Grand Total	Total	MALES										FEMALES										PERCENTAGES									
			W	BAA	HL	A	AI	NH	PWD	Total	W	BAA	HL	A	AI	NH	PWD	M	F	W	BAA	HL	A	AI	NH	PWD						
New Hires	20	9	5	2	2				11	4	4	3				4	45.00%	55.00%	45.00%	30.00%	25.00%					20.00%						
Promotions	8	4		2	2			1	4	2	1	1					50.00%	50.00%	25.00%	37.50%	37.50%					12.50%						
Intra-Agency Transfers																																
Suspensions																																
Separations	14	5	3	2					9	1	5	3				2	35.71%	64.29%	28.57%	50.00%	21.43%					14.29%						
Discharges																																
Lay Off																																
Demotions																																
Reductions	1								1	1								100.00%		100.00%												
Reinstatements																																
Reemployment																																
Upward Reallocations																																
Downward Reallocations																																

W=White B/A=Black or African American H/L=Hispanic or Latino A=Asian AI/AN=American Indian or Alaskan Native NH=Native Hawaiian or Other Pacific Islander PWD=People with Disabilities

DHR-10 (Rev Feb 2016)

# Underutilization Summary by Region

Name of Agency: Department of Human Rights

Fiscal Year: FY2024

Region	Officials and Administrators						Professionals						Technicians						Protective Service Workers					
	Women	B/A	HL	A	AI/AN	NH/PI	Women	B/A	HL	A	AI/AN	NH/PI	Women	B/A	HL	A	AI/AN	NH/PI	Women	B/A	HL	A	AI/AN	NH/PI
1				1						1														
2																								
3																								
4																								
5																								
6																								
7								1																
8																								
9																								
10																								
Total	0	0	0	1	0	0	0	1	0	1	0	0	0	0	0	0	0	0	0	0	0	0	0	0

Region	Paraprofessionals						Administrative Support						Skilled Craft Workers						Service-Maintenance					
	Women	B/A	HL	A	AI/AN	NH/PI	Women	B/A	HL	A	AI/AN	NH/PI	Women	B/A	HL	A	AI/AN	NH/PI	Women	B/A	HL	A	AI/AN	NH/PI
1																								
2																								
3																								
4																								
5																								
6																								
7																								
8																								
9																								
10																								
Total	0	0	0	0	0	0	0	0	0	0	0	0	0	0	0	0	0	0	0	0	0	0	0	0

Total underutilization for Women: 0

Total underutilization for Black or African American: 1

Total underutilization for Hispanic or Latino: 0

Total underutilization for Asian: 2

Total underutilization for American Indian or Alaskan Native: 0

Total underutilization for Native Hawaiian or Other Pacific Islander: 0

Note: If no calculations are necessary in any region where the agency does not have a facility or because there are less than ten employees in the EEO category in that region, leave that box blank.

W= Women B/AA = Black or African American H/L = Hispanic or Latino A = Asian AI/AN = American Indian or Alaskan Native NH/PI= Native Hawaiian or Other Pacific Islander  
DHR 11-AAP (Rev. Feb. 2016)

## Utilization Analysis - Region 1

Women

Black and African American

### Utilization Analysis

Agency:	Department of Human Rights				Region 1			
Affirmative Action Group:	<b>WOMEN</b>							
	Officials/ Administrators	Professionals	Technicians	Protective Service	Para- Professionals	Admin Support	Skilled Craft	Service/ Maintenance
Present Number of Employees	31	60	1	0	3	16	0	0
Availability Percent	38.81	54.03	49.23	0.00	56.64	49.51	0.00	0.00
Number Needed for Parity	12	32	0	0	1	7	0	0
Number of Affirmative Action Group Members Already Employed	18	33	1	0	2	13	0	0
Underutilization								

Agency:	Department of Human Rights				Region 1			
Affirmative Action Group:	<b>BLACK or AFRICAN AMERICAN</b>							
	Officials/ Administrators	Professionals	Technicians	Protective Service	Para- Professionals	Admin Support	Skilled Craft	Service/ Maintenance
Present Number of Employees	31	60	1	0	3	16	0	0
Availability Percent	15.42	19.92	20.43	0.00	11.54	11.43	0.00	0.00
Number Needed for Parity	4	11	0	0	0	1	0	0
Number of Affirmative Action Group Members Already Employed	12	18	1	0	3	4	0	0
Underutilization								



## Utilization Analysis - Region 1

Hispanic or Latino  
Asian

### Utilization Analysis

Agency: Department of Human Rights  
Affirmative Action Group: **HISPANIC or LATINO**

Region 1

	Officials/ Administrators	Professionals	Technicians	Protective Service	Para- Professionals	Admin Support	Skilled Craft	Service/ Maintenance
Present Number of Employees	31	60	1	0	3	16	0	0
Availability Percent	20.03	19.57	30.35	0.00	21.22	15.06	0.00	0.00
Number Needed for Parity	6	11	0	0	0	2	0	0
Number of Affirmative Action Group Members Already Employed	7	24	0	0	0	8	0	0

Underutilization

Agency: Department of Human Rights  
Affirmative Action Group: **ASIAN**

Region 1

	Officials/ Administrators	Professionals	Technicians	Protective Service	Para- Professionals	Admin Support	Skilled Craft	Service/ Maintenance
Present Number of Employees	31	60	1	0	3	16	0	0
Availability Percent	4.97	6.95	4.94	0.00	3.07	4.39	0.00	0.00
Number Needed for Parity	1	4	0	0	0	0	0	0
Number of Affirmative Action Group Members Already Employed	0	3	0	0	0	1	0	0

Underutilization

## Utilization Analysis - Region 1

### American Indian or Alaskan Native Native Hawaiian or Other Pacific Islander

Agency: Department of Human Rights  
Affirmative Action Group: **AMERICAN INDIAN or ALASKAN NATIVE** Region 1

	Officials/ Administrators	Professionals	Technicians	Protective Service	Para- Professionals	Admin Support	Skilled Craft	Service/ Maintenance
Present Number of Employees	31	60	1	0	3	16	0	0
Availability Percent	0.10	0.08	0.08	0.00	0.38	0.06	0.00	0.00
Number Needed for Parity	0	0	0	0	0	0	0	0
Number of Affirmative Action Group Members Already Employed	0	0	0	0	0	0	0	0

Underutilization

Agency: Department of Human Rights  
Affirmative Action Group: **NATIVE HAWAIIAN or OTHER PACIFIC ISLANDER** Region 1

	Officials/ Administrators	Professionals	Technicians	Protective Service	Para- Professionals	Admin Support	Skilled Craft	Service/ Maintenance
Present Number of Employees	31	60	1	0	3	16	0	0
Availability Percent	0.02	0.02	0.02	0.00	0.00	0.03	0.00	0.00
Number Needed for Parity	0	0	0	0	0	0	0	0
Number of Affirmative Action Group Members Already Employed	0	0	0	0	0	0	0	0

Underutilization

# Availability Percent Worksheet - Region 1

## Officials/Administrators

### Availability Percent Worksheet

AGENCY: [Department of Human Rights](#)  
Category: Officials/Administrators

Affirmative Action Group:  
**WOMEN**  
Region: 1  
Facility:

FACTORS	A Grand Total #	B Aff. Action Group #	C Percentage Total %	D Value Weight %	E Weighted Factor %	Source of Statistics
	-----	-----	-----	-----	-----	-----
1. Those having requisite skills in the region.	658,460	276,690	42.02%	50	21.01	Equal Employment Opportunity Tabulation 2014-2018 (5-year ACS)
2. Those promotable, trainable, and transferable in the region.	60	33	55.00%	50	27.50	Agency Workforce.
				100	38.81	Availability Percent.

AGENCY: [Department of Human Rights](#)  
Category: Officials/Administrators

Affirmative Action Group:  
**BLACK or AFRICAN AMERICAN**  
Region: 1  
Facility: 0

FACTORS	A Grand Total #	B Aff. Action Group #	C Percentage Total %	D Value Weight %	E Weighted Factor %	Source of Statistics
	-----	-----	-----	-----	-----	-----
1. Those having requisite skills in the region.	658,460	56,285	8.55%	50	4.27	Equal Employment Opportunity Tabulation 2014-2018 (5-year ACS)
2. Those promotable, trainable, and transferable in the region.	60	18	30.00%	50	15.00	Agency Workforce.
				100	15.42	Availability Percent.

AGENCY: [Department of Human Rights](#)  
Category: Officials/Administrators

Affirmative Action Group:  
**HISPANIC or LATINO**  
Region: 1  
Facility: 0

FACTORS	A Grand Total #	B Aff. Action Group #	C Percentage Total %	D Value Weight %	E Weighted Factor %	Source of Statistics
	-----	-----	-----	-----	-----	-----
1. Those having requisite skills in the region.	658,460	66,265	10.06%	50	5.03	Equal Employment Opportunity Tabulation 2014-2018 (5-year ACS)
2. Those promotable, trainable, and transferable in the region.	60	24	40.00%	50	20.00	Agency Workforce.
				100	20.03	Availability Percent.

DHR-5-AAP (Rev. Feb. 2016)

# Availability Percent Worksheet - Region 1

## (continued) Officials/Administrators

### Availability Percent Worksheet

AGENCY: [Department of Human Rights](#)  
Category: Officials/Administrators

Affirmative Action Group:  
**ASIAN**  
Region: 1  
Facility: 0

FACTORS	A Grand Total #	B Aff. Action Group #	C Percentage Total %	D Value Weight %	E Weighted Factor %	Source of Statistics
1. Those having requisite skills in the region.	658,460	48,890	7.42%	50	3.71	Equal Employment Opportunity Tabulation 2014-2018 (5-year ACS)
2. Those promotable, trainable, and transferable in the region.	60	3	5.00%	50	2.50	Agency Workforce.
				100	4.97	Availability Percent

AGENCY: [Department of Human Rights](#)  
Category: Officials/Administrators

Affirmative Action Group:  
**AMERICAN INDIAN or  
ALASKAN NATIVE**  
Region: 1  
Facility: 0

FACTORS	A Grand Total #	B Aff. Action Group #	C Percentage Total %	D Value Weight %	E Weighted Factor %	Source of Statistics
1. Those having requisite skills in the region.	658,460	784	0.12%	100	0.12	Equal Employment Opportunity Tabulation 2014-2018 (5-year ACS)
2. Those promotable, trainable, and transferable in the region.	60	0	0.00%	0	0.00	Agency Workforce.
				100	0.10	Availability Percent.

AGENCY: [Department of Human Rights](#)  
Category: Officials/Administrators

Affirmative Action Group:  
**NATIVE HAWAIIAN or OTHER  
PACIFIC ISLANDER**  
Region: 1  
Facility: 0

FACTORS	A Grand Total #	B Aff. Action Group #	C Percentage Total %	D Value Weight %	E Weighted Factor %	Source of Statistics
1. Those having requisite skills in the region.	658,460	160	0.02%	100	0.02	Equal Employment Opportunity Tabulation 2014-2018 (5-year ACS)
2. Those promotable, trainable, and transferable in the region.	60	0	0.00%	0	0.00	Agency Workforce.
				100	0.02	Availability Percent.

# Availability Percent Worksheet - Region 1

## Professionals

### Availability Percent Worksheet

AGENCY: [Department of Human Rights](#)  
Category: Professionals

Affirmative Action Group:  
**WOMEN**  
Region: 1  
Facility:

FACTORS	A Grand Total #	B Aff. Action Group #	C Percentage Total %	D Value Weight %	E Weighted Factor %	Source of Statistics
1. Those having requisite skills in the region.	940,565	518,070	55.08%	50	27.54	Equal Employment Opportunity Tabulation 2014-2018 (5-year ACS)
2. Those promotable, trainable, and transferable in the region.	20	16	80.00%	50	40.00	Agency Workforce.
				100	54.03	Availability Percent.

AGENCY: [Department of Human Rights](#)  
Category: Professionals

Affirmative Action Group:  
**BLACK or AFRICAN AMERICAN**  
Region: 1  
Facility: 0

FACTORS	A Grand Total #	B Aff. Action Group #	C Percentage Total %	D Value Weight %	E Weighted Factor %	Source of Statistics
1. Those having requisite skills in the region.	940,565	92,115	9.79%	50	4.90	Equal Employment Opportunity Tabulation 2014-2018 (5-year ACS)
2. Those promotable, trainable, and transferable in the region.	20	8	40.00%	50	20.00	Agency Workforce.
				100	19.92	Availability Percent.

AGENCY: [Department of Human Rights](#)  
Category: Professionals

Affirmative Action Group:  
**HISPANIC or LATINO**  
Region: 1  
Facility: 0

FACTORS	A Grand Total #	B Aff. Action Group #	C Percentage Total %	D Value Weight %	E Weighted Factor %	Source of Statistics
1. Those having requisite skills in the region.	940,565	83,970	8.93%	50	4.46	Equal Employment Opportunity Tabulation 2014-2018 (5-year ACS)
2. Those promotable, trainable, and transferable in the region.	20	8	40.00%	50	20.00	Agency Workforce.
				100	19.57	Availability Percent.

# Availability Percent Worksheet - Region 1

## (continued) Professionals

### Availability Percent Worksheet

AGENCY: [Department of Human Rights](#)  
Category: Professionals

Affirmative Action Group:  
**ASIAN**  
Region: 1  
Facility: 0

FACTORS	A Grand Total #	B Aff. Action Group #	C Percentage Total %	D Value Weight %	E Weighted Factor %	Source of Statistics
1. Those having requisite skills in the region.	940,565	116,395	12.38%	50	6.19	Equal Employment Opportunity Tabulation 2014-2018 (5-year ACS)
2. Those promotable, trainable, and transferable in the region.	20	1	5.00%	50	2.50	Agency Workforce.
				100	6.95	Availability Percent.

AGENCY: [Department of Human Rights](#)  
Category: Professionals

Affirmative Action Group:  
**AMERICAN INDIAN or  
ALASKAN NATIVE**  
Region: 1  
Facility: 0

FACTORS	A Grand Total #	B Aff. Action Group #	C Percentage Total %	D Value Weight %	E Weighted Factor %	Source of Statistics
1. Those having requisite skills in the region.	940,565	923	0.10%	100	0.10	Equal Employment Opportunity Tabulation 2014-2018 (5-year ACS)
2. Those promotable, trainable, and transferable in the region.	20	0	0.00%	0	0.00	Agency Workforce.
				100	0.08	Availability Percent.

AGENCY: [Department of Human Rights](#)  
Category: Professionals

Affirmative Action Group:  
**NATIVE HAWAIIAN or OTHER  
PACIFIC ISLANDER**  
Region: 1  
Facility: 0

FACTORS	A Grand Total #	B Aff. Action Group #	C Percentage Total %	D Value Weight %	E Weighted Factor %	Source of Statistics
1. Those having requisite skills in the region.	940,565	244	0.03%	100	0.03	Equal Employment Opportunity Tabulation 2014-2018 (5-year ACS)
2. Those promotable, trainable, and transferable in the region.	20	0	0.00%	0	0.00	Agency Workforce.
				100	0.02	Availability Percent.

# Availability Percent Worksheet - Region 1

## Technicians

AGENCY: Department of Human Rights  
Category: Technicians

Affirmative Action Group:  
**WOMEN**  
Region: 1  
Facility:

FACTORS	A Grand Total #	B Aff. Action Group #	C Percentage Total %	D Value Weight %	E Weighted Factor %	Source of Statistics
1. Those having requisite skills in the region.	330,820	145,985	44.13%	50	22.06	Equal Employment Opportunity Tabulation 2014-2018 (5-year ACS)
2. Those promotable, trainable, and transferable in the region.	19	15	78.95%	50	39.47	Agency Workforce.
				100	49.23	Availability Percent.

AGENCY: Department of Human Rights  
Category: Technicians

Affirmative Action Group:  
**BLACK or AFRICAN  
AMERICAN**  
Region: 1  
Facility: 0

FACTORS	A Grand Total #	B Aff. Action Group #	C Percentage Total %	D Value Weight %	E Weighted Factor %	Source of Statistics
1. Those having requisite skills in the region.	330,820	47,120	14.24%	50	7.12	Equal Employment Opportunity Tabulation 2014-2018 (5-year ACS)
2. Those promotable, trainable, and transferable in the region.	19	7	36.84%	50	18.42	Agency Workforce.
				100	20.43	Availability Percent.

AGENCY: Department of Human Rights  
Category: Technicians

Affirmative Action Group:  
**HISPANIC or LATINO**  
Region: 1  
Facility: 0

FACTORS	A Grand Total #	B Aff. Action Group #	C Percentage Total %	D Value Weight %	E Weighted Factor %	Source of Statistics
1. Those having requisite skills in the region.	330,820	111,715	33.77%	50	16.88	Equal Employment Opportunity Tabulation 2014-2018 (5-year ACS)
2. Those promotable, trainable, and transferable in the region.	19	8	42.11%	50	21.05	Agency Workforce.
				100	30.35	Availability Percent.

# Availability Percent Worksheet - Region 1

## (continued) Technicians

### Availability Percent Worksheet

AGENCY: Department of Human Rights  
Category: Technicians

Affirmative Action Group:  
**ASIAN**  
Region: 1  
Facility: 0

FACTORS	A Grand Total #	B Aff. Action Group #	C Percentage Total %	D Value Weight %	E Weighted Factor %	Source of Statistics
1. Those having requisite skills in the region.	330,820	23,405	7.07%	50	3.54	Equal Employment Opportunity Tabulation 2014-2018 (5-year ACS)
2. Those promotable, trainable, and transferable in the region.	19	1	5.26%	50	2.63	Agency Workforce.
				100	4.94	Availability Percent.

AGENCY: Department of Human Rights  
Category: Technicians

Affirmative Action Group:  
**AMERICAN INDIAN or  
ALASKAN NATIVE**  
Region: 1  
Facility: 0

FACTORS	A Grand Total #	B Aff. Action Group #	C Percentage Total %	D Value Weight %	E Weighted Factor %	Source of Statistics
1. Those having requisite skills in the region.	330,820	342	0.10%	100	0.10	Equal Employment Opportunity Tabulation 2014-2018 (5-year ACS)
2. Those promotable, trainable, and transferable in the region.	19	0	0.00%	0	0.00	Agency Workforce.
				100	0.08	Availability Percent.

AGENCY: Department of Human Rights  
Category: Technicians

Affirmative Action Group:  
**NATIVE HAWAIIAN or OTHER  
PACIFIC ISLANDER**  
Region: 1  
Facility: 0

FACTORS	A Grand Total #	B Aff. Action Group #	C Percentage Total %	D Value Weight %	E Weighted Factor %	Source of Statistics
1. Those having requisite skills in the region.	330,820	90	0.03%	100	0.03	Equal Employment Opportunity Tabulation 2014-2018 (5-year ACS)
2. Those promotable, trainable, and transferable in the region.	19	0	0.00%	0	0.00	Agency Workforce.
				100	0.02	Availability Percent.



# Availability Percent Worksheet - Region 1

## Paraprofessionals

### Availability Percent Worksheet

AGENCY: [Department of Human Rights](#)  
Category: Paraprofessionals

Affirmative Action Group:  
**WOMEN**  
Region: 1  
Facility: 0

FACTORS	A Grand Total #	B Aff. Action Group #	C Percentage Total %	D Value Weight %	E Weighted Factor %	Source of Statistics
1. Those having requisite skills in the region.	2,336	1,410	60.36%	50	30.18	Equal Employment Opportunity Tabulation 2014-2018 (5-year ACS)
2. Those promotable, trainable, and transferable in the region.	16	13	81.25%	50	40.63	Agency Workforce.
				100	56.64	Availability Percent.

AGENCY: [Department of Human Rights](#)  
Category: Paraprofessionals

Affirmative Action Group:  
**BLACK or AFRICAN AMERICAN**  
Region: 1  
Facility: 0

FACTORS	A Grand Total #	B Aff. Action Group #	C Percentage Total %	D Value Weight %	E Weighted Factor %	Source of Statistics
1. Those having requisite skills in the region.	2,336	90	3.85%	50	1.93	Equal Employment Opportunity Tabulation 2014-2018 (5-year ACS)
2. Those promotable, trainable, and transferable in the region.	16	4	25.00%	50	12.50	Agency Workforce.
				100	11.54	Availability Percent.

AGENCY: [Department of Human Rights](#)  
Category: Paraprofessionals

Affirmative Action Group:  
**HISPANIC or LATINO**  
Region: 1  
Facility: 0

FACTORS	A Grand Total #	B Aff. Action Group #	C Percentage Total %	D Value Weight %	E Weighted Factor %	Source of Statistics
1. Those having requisite skills in the region.	2,336	71	3.04%	50	1.52	Equal Employment Opportunity Tabulation 2014-2018 (5-year ACS)
2. Those promotable, trainable, and transferable in the region.	16	8	50.00%	50	25.00	Agency Workforce.
				100	21.22	Availability Percent.

# Availability Percent Worksheet - Region 1

## (continued) Paraprofessionals

### Availability Percent Worksheet

AGENCY: Department of Human Rights  
Category: Paraprofessionals

Affirmative Action Group:  
**ASIAN**  
Region: 1  
Facility: 0

FACTORS	A Grand Total #	B Aff. Action Group #	C Percentage Total %	D Value Weight %	E Weighted Factor %	Source of Statistics
1. Those having requisite skills in the region.	2,336	33	1.41%	50	0.71	Equal Employment Opportunity Tabulation 2014-2018 (5-year ACS)
2. Those promotable, trainable, and transferable in the region.	16	1	6.25%	50	3.13	Agency Workforce.
				100	3.07	Availability Percent.

AGENCY: Department of Human Rights  
Category: Paraprofessionals

Affirmative Action Group:  
**AMERICAN INDIAN or  
ALASKAN NATIVE**  
Region: 1  
Facility: 0

FACTORS	A Grand Total #	B Aff. Action Group #	C Percentage Total %	D Value Weight %	E Weighted Factor %	Source of Statistics
1. Those having requisite skills in the region.	2,336	11	0.47%	100	0.47	Equal Employment Opportunity Tabulation 2014-2018 (5-year ACS)
2. Those promotable, trainable, and transferable in the region.	16	0	0.00%	0	0.00	Agency Workforce.
				100	0.38	Availability Percent.

AGENCY: Department of Human Rights  
Category: Paraprofessionals

Affirmative Action Group:  
**NATIVE HAWAIIAN or OTHER  
PACIFIC ISLANDER**  
Region: 1  
Facility: 0

FACTORS	A Grand Total #	B Aff. Action Group #	C Percentage Total %	D Value Weight %	E Weighted Factor %	Source of Statistics
1. Those having requisite skills in the region.	2,336	0	0.00%	100	0.00	Equal Employment Opportunity Tabulation 2014-2018 (5-year ACS)
2. Those promotable, trainable, and transferable in the region.	16	0	0.00%	0	0.00	Agency Workforce.
				100	0.00	Availability Percent.

# Availability Percent Worksheet - Region 1

## Administrative Support

### Availability Percent Worksheet

AGENCY: [Department of Human Rights](#)  
Category: Administrative Support

Affirmative Action Group:  
**WOMEN**  
Region: 1  
Facility:

FACTORS	A Grand Total #	B Aff. Action Group #	C Percentage Total %	D Value Weight %	E Weighted Factor %	Source of Statistics
1. Those having requisite skills in the region.	1,020,190	631,390	61.89%	100	61.89	Equal Employment Opportunity Tabulation 2014-2018 (5-year ACS)
2. Those promotable, trainable, and transferable in the region.	0	0	0.00%	0	0.00	Agency Workforce.
				100	49.51	Availability Percent.

AGENCY: [Department of Human Rights](#)  
Category: Administrative Support

Affirmative Action Group:  
**BLACK or AFRICAN AMERICAN**  
Region: 1  
Facility: 0

FACTORS	A Grand Total #	B Aff. Action Group #	C Percentage Total %	D Value Weight %	E Weighted Factor %	Source of Statistics
1. Those having requisite skills in the region.	1,020,190	145,780	14.29%	100	14.29	Equal Employment Opportunity Tabulation 2014-2018 (5-year ACS)
2. Those promotable, trainable, and transferable in the region.	0	0	0.00%	0	0.00	Agency Workforce.
				100	11.43	Availability Percent.

AGENCY: [Department of Human Rights](#)  
Category: Administrative Support

Affirmative Action Group:  
**HISPANIC or LATINO**  
Region: 1  
Facility: 0

FACTORS	A Grand Total #	B Aff. Action Group #	C Percentage Total %	D Value Weight %	E Weighted Factor %	Source of Statistics
1. Those having requisite skills in the region.	1,020,190	192,010	18.82%	100	18.82	Equal Employment Opportunity Tabulation 2014-2018 (5-year ACS)
2. Those promotable, trainable, and transferable in the region.	0	0	0.00%	0	0.00	Agency Workforce.
				100	15.06	Availability Percent.

# Availability Percent Worksheet - Region 1

## (continued) Administrative Support

### Availability Percent Worksheet

AGENCY: [Department of Human Rights](#)  
Category: Administrative Support

Affirmative Action Group:  
**ASIAN**  
Region: 1  
Facility: 0

FACTORS	A Grand Total #	B Aff. Action Group #	C Percentage Total %	D Value Weight %	E Weighted Factor %	Source of Statistics
1. Those having requisite skills in the region.	1,020,190	56,040	5.49%	100	5.49	Equal Employment Opportunity Tabulation 2014-2018 (5-year ACS)
2. Those promotable, trainable, and transferable in the region.	0	0	0.00%	0	0.00	Agency Workforce.
				100	4.39	Availability Percent.

AGENCY: [Department of Human Rights](#)  
Category: Administrative Support

Affirmative Action Group:  
**AMERICAN INDIAN or  
ALASKAN NATIVE**  
Region: 1  
Facility: 0

FACTORS	A Grand Total #	B Aff. Action Group #	C Percentage Total %	D Value Weight %	E Weighted Factor %	Source of Statistics
1. Those having requisite skills in the region.	1,020,190	815	0.08%	100	0.08	Equal Employment Opportunity Tabulation 2014-2018 (5-year ACS)
2. Those promotable, trainable, and transferable in the region.	0	0	0.00%	0	0.00	Agency Workforce.
				100	0.06	Availability Percent.

AGENCY: [Department of Human Rights](#)  
Category: Administrative Support

Affirmative Action Group:  
**NATIVE HAWAIIAN or OTHER  
PACIFIC ISLANDER**  
Region: 1  
Facility: 0

FACTORS	A Grand Total #	B Aff. Action Group #	C Percentage Total %	D Value Weight %	E Weighted Factor %	Source of Statistics
1. Those having requisite skills in the region.	1,020,190	319	0.03%	100	0.03	Equal Employment Opportunity Tabulation 2014-2018 (5-year ACS)
2. Those promotable, trainable, and transferable in the region.	0	0	0.00%	0	0.00	Agency Workforce.
				100	0.03	Availability Percent.

# Availability Percent Worksheet - Region 7

## Officials/Administrators

### Availability Percent Worksheet

AGENCY: **Department of Human Rights**  
Category: **Officials/Administrators**

Affirmative Action Group:  
**WOMEN**  
Region: 7  
Facility: 0

FACTORS	A Grand Total #	B Aff. Action Group #	C Percentage Total %	D Value Weight %	E Weighted Factor %	Source of Statistics
1. Those having requisite skills in the region.	30,405	12,585	41.39%	50	20.70	Equal Employment Opportunity Tabulation 2014-2018 (5-year ACS)
2. Those promotable, trainable, and transferable in the region.	9	6	66.67%	50	33.33	Agency Workforce.
				100	43.22	Availability Percent.

AGENCY: **Department of Human Rights**  
Category: **Officials/Administrators**

Affirmative Action Group:  
**BLACK or AFRICAN  
AMERICAN**  
Region: 7  
Facility: 0

FACTORS	A Grand Total #	B Aff. Action Group #	C Percentage Total %	D Value Weight %	E Weighted Factor %	Source of Statistics
1. Those having requisite skills in the region.	30,405	1,285	4.23%	100	4.23	Equal Employment Opportunity Tabulation 2014-2018 (5-year ACS)
2. Those promotable, trainable, and transferable in the region.	9	0	0.00%	0	0.00	Agency Workforce.
				100	3.38	Availability Percent.

AGENCY: **Department of Human Rights**  
Category: **Officials/Administrators**

Affirmative Action Group:  
**HISPANIC or LATINO**  
Region: 7  
Facility: 0

FACTORS	A Grand Total #	B Aff. Action Group #	C Percentage Total %	D Value Weight %	E Weighted Factor %	Source of Statistics
1. Those having requisite skills in the region.	30,405	427	1.40%	100	1.40	Equal Employment Opportunity Tabulation 2014-2018 (5-year ACS)
2. Those promotable, trainable, and transferable in the region.	9	0	0.00%	0	0.00	Agency Workforce.
				100	1.12	Availability Percent.

# Availability Percent Worksheet - Region 7

## (Continued) Officials/Administrators

### Availability Percent Worksheet

AGENCY: Department of Human Rights  
Category: Officials/Administrators

Affirmative Action Group:  
**ASIAN**  
Region: 7  
Facility: 0

FACTORS	A Grand Total #	B Aff. Action Group #	C Percentage Total %	D Value Weight %	E Weighted Factor %	Source of Statistics
1. Those having requisite skills in the region.	30,405	282	0.93%	50	0.46	Equal Employment Opportunity Tabulation 2014-2018 (5-year ACS)
2. Those promotable, trainable, and transferable in the region.	9	1	11.11%	50	5.56	Agency Workforce.
				100	4.82	Availability Percent.

AGENCY: Department of Human Rights  
Category: Officials/Administrators

Affirmative Action Group:  
**AMERICAN INDIAN or  
ALASKAN NATIVE**  
Region: 7  
Facility: 0

FACTORS	A Grand Total #	B Aff. Action Group #	C Percentage Total %	D Value Weight %	E Weighted Factor %	Source of Statistics
1. Those having requisite skills in the region.	30,405	45	0.15%	100	0.15	Equal Employment Opportunity Tabulation 2014-2018 (5-year ACS)
2. Those promotable, trainable, and transferable in the region.	9	0	0.00%	0	0.00	Agency Workforce.
				100	0.12	Availability Percent.

AGENCY: Department of Human Rights  
Category: Officials/Administrators

Affirmative Action Group:  
**NATIVE HAWAIIAN or OTHER  
PACIFIC ISLANDER**  
Region: 7  
Facility: 0

FACTORS	A Grand Total #	B Aff. Action Group #	C Percentage Total %	D Value Weight %	E Weighted Factor %	Source of Statistics
1. Those having requisite skills in the region.	30,405	15	0.05%	100	0.05	Equal Employment Opportunity Tabulation 2014-2018 (5-year ACS)
2. Those promotable, trainable, and transferable in the region.	9	0	0.00%	0	0.00	Agency Workforce.
				100	0.04	Availability Percent.

# Availability Percent Worksheet - Region 7

## Professionals

### Availability Percent Worksheet

AGENCY: Department of Human Rights  
Category: Professionals

Affirmative Action Group:  
**WOMEN**  
Region: 7  
Facility: 0

FACTORS	A Grand Total #	B Aff. Action Group #	C Percentage Total %	D Value Weight %	E Weighted Factor %	Source of Statistics
1. Those having requisite skills in the region.	47,290	28,700	60.69%	50	30.34	Equal Employment Opportunity Tabulation 2014-2018 (5-year ACS)
2. Those promotable, trainable, and transferable in the region.	4	4	100.00%	50	50.00	Agency Workforce.
				100	64.28	Availability Percent.

AGENCY: Department of Human Rights  
Category: Professionals

Affirmative Action Group:  
**BLACK or AFRICAN AMERICAN**  
Region: 7  
Facility: 0

FACTORS	A Grand Total #	B Aff. Action Group #	C Percentage Total %	D Value Weight %	E Weighted Factor %	Source of Statistics
1. Those having requisite skills in the region.	47,290	2,220	4.69%	50	2.35	Equal Employment Opportunity Tabulation 2014-2018 (5-year ACS)
2. Those promotable, trainable, and transferable in the region.	4	2	50.00%	50	25.00	Agency Workforce.
				100	21.88	Availability Percent.

AGENCY: Department of Human Rights  
Category: Professionals

Affirmative Action Group:  
**HISPANIC or LATINO**  
Region: 7  
Facility: 0

FACTORS	A Grand Total #	B Aff. Action Group #	C Percentage Total %	D Value Weight %	E Weighted Factor %	Source of Statistics
1. Those having requisite skills in the region.	47,290	844	1.78%	50	0.89	Equal Employment Opportunity Tabulation 2014-2018 (5-year ACS)
2. Those promotable, trainable, and transferable in the region.	4	1	25.00%	50	12.50	Agency Workforce.
				100	10.71	Availability Percent.

# Availability Percent Worksheet - Region 7

## (Continued) Professionals

### Availability Percent Worksheet

AGENCY: Department of Human Rights  
Category: Professionals

Affirmative Action Group:  
**ASIAN**  
Region: 7  
Facility: 0

FACTORS	A Grand Total #	B Aff. Action Group #	C Percentage Total %	D Value Weight %	E Weighted Factor %	Source of Statistics
1. Those having requisite skills in the region.	47,290	1,683	3.56%	100	3.56	Equal Employment Opportunity Tabulation 2014-2018 (5-year ACS)
2. Those promotable, trainable, and transferable in the region.	4	0	0.00%	0	0.00	Agency Workforce.
				100	2.85	Availability Percent.

AGENCY: Department of Human Rights  
Category: Professionals

Affirmative Action Group:  
**AMERICAN INDIAN or  
ALASKAN NATIVE**  
Region: 7  
Facility: 0

FACTORS	A Grand Total #	B Aff. Action Group #	C Percentage Total %	D Value Weight %	E Weighted Factor %	Source of Statistics
1. Those having requisite skills in the region.	47,290	39	0.08%	100	0.08	Equal Employment Opportunity Tabulation 2014-2018 (5-year ACS)
2. Those promotable, trainable, and transferable in the region.	4	0	0.00%	0	0.00	Agency Workforce.
				100	0.07	Availability Percent.

AGENCY: Department of Human Rights  
Category: Professionals

Affirmative Action Group:  
**NATIVE HAWAIIAN or OTHER  
PACIFIC ISLANDER**  
Region: 7  
Facility: 0

FACTORS	A Grand Total #	B Aff. Action Group #	C Percentage Total %	D Value Weight %	E Weighted Factor %	Source of Statistics
1. Those having requisite skills in the region.	47,290	64	0.14%	100	0.14	Equal Employment Opportunity Tabulation 2014-2018 (5-year ACS)
2. Those promotable, trainable, and transferable in the region.	4	0	0.00%	0	0.00	Agency Workforce.
				100	0.11	Availability Percent.



# Availability Percent Worksheet - Region 7

## Technicians

### Availability Percent Worksheet

AGENCY: Department of Human Rights  
Category: Technicians

Affirmative Action Group:  
**WOMEN**  
Region: 7  
Facility: 0

FACTORS	A Grand Total #	B Aff. Action Group #	C Percentage Total %	D Value Weight %	E Weighted Factor %	Source of Statistics
1. Those having requisite skills in the region.	20,260	9,300	45.90%	50	22.95	Equal Employment Opportunity Tabulation 2014-2018 (5-year ACS)
2. Those promotable, trainable, and transferable in the region.	4	4	100.00%	50	50.00	Agency Workforce.
				100	58.36	Availability Percent.

AGENCY: Department of Human Rights  
Category: Technicians

Affirmative Action Group:  
**BLACK or AFRICAN  
AMERICAN**  
Region: 7  
Facility: 0

FACTORS	A Grand Total #	B Aff. Action Group #	C Percentage Total %	D Value Weight %	E Weighted Factor %	Source of Statistics
1. Those having requisite skills in the region.	20,260	1,488	3.08%	50	1.54	Equal Employment Opportunity Tabulation Availability Percent.
2. Those promotable, trainable, and transferable in the region.	4	2	50.00%	50	25.00	Agency Workforce.
				100	21.23	Availability Percent.

AGENCY: Department of Human Rights  
Category: Technicians

Affirmative Action Group:  
**HISPANIC or LATINO**  
Region: 7  
Facility: 0

FACTORS	A Grand Total #	B Aff. Action Group #	C Percentage Total %	D Value Weight %	E Weighted Factor %	Source of Statistics
1. Those having requisite skills in the region.	20,260	535	2.64%	50	1.32	Equal Employment Opportunity Tabulation 2014-2018 (5-year ACS)
2. Those promotable, trainable, and transferable in the region.	4	1	25.00%	50	12.50	Agency Workforce.
				100	11.06	Availability Percent.

# Availability Percent Worksheet - Region 7

## (Continued) Technicians

### Availability Percent Worksheet

AGENCY: Department of Human Rights  
Category: Technicians

Affirmative Action Group:  
**ASIAN**  
Region: 7  
Facility: 0

FACTORS	A Grand Total #	B Aff. Action Group #	C Percentage Total %	D Value Weight %	E Weighted Factor %	Source of Statistics
1. Those having requisite skills in the region.	20,260	199	0.98%	100	0.98	Equal Employment Opportunity Tabulation 2014-2018 (5-year ACS)
2. Those promotable, trainable, and transferable in the region.	4	0	0.00%	0	0.00	Agency Workforce.
				100	0.79	Availability Percent.

AGENCY: Department of Human Rights  
Category: Technicians

Affirmative Action Group:  
**AMERICAN INDIAN or  
ALASKAN NATIVE**  
Region: 7  
Facility: 0

FACTORS	A Grand Total #	B Aff. Action Group #	C Percentage Total %	D Value Weight %	E Weighted Factor %	Source of Statistics
1. Those having requisite skills in the region.	20,260	64	0.32%	100	0.32	Equal Employment Opportunity Tabulation Availability Percent.
2. Those promotable, trainable, and transferable in the region.	4	0	0.00%	0	0.00	Agency Workforce.
				100	0.25	Availability Percent.

AGENCY: Department of Human Rights  
Category: Technicians

Affirmative Action Group:  
**NATIVE HAWAIIAN or OTHER  
PACIFIC ISLANDER**  
Region: 7  
Facility: 0

FACTORS	A Grand Total #	B Aff. Action Group #	C Percentage Total %	D Value Weight %	E Weighted Factor %	Source of Statistics
1. Those having requisite skills in the region.	20,260	0	0.00%	100	0.00	Equal Employment Opportunity Tabulation 2014-2018 (5-year ACS)
2. Those promotable, trainable, and transferable in the region.	4	0	0.00%	0	0.00	Agency Workforce.
				100	0.00	Availability Percent.

# Availability Percent Worksheet - Region 7

## Paraprofessionals

### Availability Percent Worksheet

AGENCY: Department of Human Rights  
Category: Paraprofessionals

Affirmative Action Group:  
**WOMEN**  
Region: 7  
Facility: 0

FACTORS	A Grand Total #	B Aff. Action Group #	C Percentage Total %	D Value Weight %	E Weighted Factor %	Source of Statistics
1. Those having requisite skills in the region.	239	137	57.32%	50	28.66	Equal Employment Opportunity Tabulation 2014-2018 (5-year ACS)
2. Those promotable, trainable, and transferable in the region.	3	1	33.33%	50	16.67	Agency Workforce.
				100	36.26	Availability Percent.

AGENCY: Department of Human Rights  
Category: Paraprofessionals

Affirmative Action Group:  
**BLACK or AFRICAN  
AMERICAN**  
Region: 7  
Facility: 0

FACTORS	A Grand Total #	B Aff. Action Group #	C Percentage Total %	D Value Weight %	E Weighted Factor %	Source of Statistics
1. Those having requisite skills in the region.	239	36	15.06%	50	7.53	Equal Employment Opportunity Tabulation 2014-2018 (5-year ACS)
2. Those promotable, trainable, and transferable in the region.	3	2	66.67%	50	33.33	Agency Workforce.
				100	32.69	Availability Percent.

AGENCY: Department of Human Rights  
Category: Paraprofessionals

Affirmative Action Group:  
**HISPANIC or LATINO**  
Region: 7  
Facility: 0

FACTORS	A Grand Total #	B Aff. Action Group #	C Percentage Total %	D Value Weight %	E Weighted Factor %	Source of Statistics
1. Those having requisite skills in the region.	239	0	0.00%	50	0.00	Equal Employment Opportunity Tabulation 2014-2018 (5-year ACS)
2. Those promotable, trainable, and transferable in the region.	3	1	33.33%	50	16.67	Agency Workforce.
				100	13.33	Availability Percent.

# Availability Percent Worksheet - Region 7

## (Continued) Paraprofessionals

### Availability Percent Worksheet

AGENCY: Department of Human Rights  
Category: Paraprofessionals

Affirmative Action Group:  
**ASIAN**  
Region: 7  
Facility: 0

FACTORS	A Grand Total #	B Aff. Action Group #	C Percentage Total %	D Value Weight %	E Weighted Factor %	Source of Statistics
1. Those having requisite skills in the region.	239	0	0.00%	100	0.00	Equal Employment Opportunity Tabulation 2014-2018 (5-year ACS)
2. Those promotable, trainable, and transferable in the region.	3	0	0.00%	0	0.00	Agency Workforce.
				100	0.00	Availability Percent.

AGENCY: Department of Human Rights  
Category: Paraprofessionals

Affirmative Action Group:  
**AMERICAN INDIAN or  
ALASKAN NATIVE**  
Region: 7  
Facility: 0

FACTORS	A Grand Total #	B Aff. Action Group #	C Percentage Total %	D Value Weight %	E Weighted Factor %	Source of Statistics
1. Those having requisite skills in the region.	239	0	0.00%	100	0.00	Equal Employment Opportunity Tabulation 2014-2018 (5-year ACS)
2. Those promotable, trainable, and transferable in the region.	3	0	0.00%	0	0.00	Agency Workforce.
				100	0.00	Availability Percent.

AGENCY: Department of Human Rights  
Category: Paraprofessionals

Affirmative Action Group:  
**NATIVE HAWAIIAN or OTHER  
PACIFIC ISLANDER**  
Region: 7  
Facility: 0

FACTORS	A Grand Total #	B Aff. Action Group #	C Percentage Total %	D Value Weight %	E Weighted Factor %	Source of Statistics
1. Those having requisite skills in the region.	239	0	0.00%	100	0.00	Equal Employment Opportunity Tabulation 2014-2018 (5-year ACS)
2. Those promotable, trainable, and transferable in the region.	3	0	0.00%	0	0.00	Agency Workforce.
				100	0.00	Availability Percent.

# Availability Percent Worksheet - Region 7

## Administrative Support

### Availability Percent Worksheet

AGENCY: **Department of Human Rights**  
Category: Administrative Support

Affirmative Action Group:  
**WOMEN**  
Region: 7  
Facility: 0

FACTORS	A Grand Total #	B Aff. Action Group #	C Percentage Total %	D Value Weight %	E Weighted Factor %	Source of Statistics
1. Those having requisite skills in the region.	55,430	38,150	68.83%	100	68.83	Equal Employment Opportunity Tabulation 2014-2018 (5-year ACS)
2. Those promotable, trainable, and transferable in the region.	0		0.00%	0	0.00	Agency Workforce.
				100	55.06	Availability Percent.

AGENCY: **Department of Human Rights**  
Category: Administrative Support

Affirmative Action Group:  
**BLACK or AFRICAN  
AMERICAN**  
Region: 7  
Facility: 0

FACTORS	A Grand Total #	B Aff. Action Group #	C Percentage Total %	D Value Weight %	E Weighted Factor %	Source of Statistics
1. Those having requisite skills in the region.	55,430	4,060	7.32%	100	7.32	Equal Employment Opportunity Tabulation 2014-2018 (5-year ACS)
2. Those promotable, trainable, and transferable in the region.	0		0.00%	0	0.00	Agency Workforce.
				100	5.86	Availability Percent.

AGENCY: **Department of Human Rights**  
Category: Administrative Support

Affirmative Action Group:  
**HISPANIC or LATINO**  
Region: 7  
Facility: 0

FACTORS	A Grand Total #	B Aff. Action Group #	C Percentage Total %	D Value Weight %	E Weighted Factor %	Source of Statistics
1. Those having requisite skills in the region.	55,430	933	1.68%	100	1.68	Equal Employment Opportunity Tabulation 2014-2018 (5-year ACS)
2. Those promotable, trainable, and transferable in the region.	0		0.00%	0	0.00	Agency Workforce.
				100	1.35	Availability Percent.

# Availability Percent Worksheet - Region 7

## (Continued) Administrative Support

### Availability Percent Worksheet

AGENCY: Department of Human Rights

Category: Administrative Support

Affirmative Action Group:

ASIAN

Region: 7

Facility: 0

FACTORS	A Grand Total #	B Aff. Action Group #	C Percentage Total %	D Value Weight %	E Weighted Factor %	Source of Statistics
1. Those having requisite skills in the region.	55,430	454	0.82%	100	0.82	Equal Employment Opportunity Tabulation 2014-2018 (5-year ACS)
2. Those promotable, trainable, and transferable in the region.	0		0.00%	0	0.00	Agency Workforce.
				100	0.66	Availability Percent.

AGENCY: Department of Human Rights

Category: Administrative Support

Affirmative Action Group:

AMERICAN INDIAN or  
ALASKAN NATIVE

Region: 7

Facility: 0

FACTORS	A Grand Total #	B Aff. Action Group #	C Percentage Total %	D Value Weight %	E Weighted Factor %	Source of Statistics
1. Those having requisite skills in the region.	55,430	62	0.11%	100	0.11	Equal Employment Opportunity Tabulation 2014-2018 (5-year ACS)
2. Those promotable, trainable, and transferable in the region.	0		0.00%	0	0.00	Agency Workforce.
				100	0.09	Availability Percent.

AGENCY: Department of Human Rights

Category: Administrative Support

Affirmative Action Group:

NATIVE HAWAIIAN or OTHER  
PACIFIC ISLANDER

Region: 7

Facility: 0

FACTORS	A Grand Total #	B Aff. Action Group #	C Percentage Total %	D Value Weight %	E Weighted Factor %	Source of Statistics
1. Those having requisite skills in the region.	55,430	25	0.05%	100	0.05	Equal Employment Opportunity Tabulation 2014-2018 (5-year ACS)
2. Those promotable, trainable, and transferable in the region.	0		0.00%	0	0.00	Agency Workforce.
				100	0.04	Availability Percent.

DHR-5-AAP (Rev. Feb. 2016)

## PART III

### Numerical Goals and Timetables

#### Areas to be addressed:

Region 1: Underutilization of 1 - Asian / Officials / Administrators  
Underutilization of 1 - Asian / Professional

#### Goal:

Eliminate the underutilization of 1 Asian person in the category of Officials/Administrators in Region 1; and 1 Asian person in the category of Professionals in Region 1.

#### Objective:

As vacancies occur, ensure IDHR recruitment and selection procedures maximize the sourcing of candidates from underutilized demographic groups and ensure effective candidate evaluation.

Action Item	Assignment of Responsibility	Completion Target Date	Monitoring Procedure
Notify relevant recruitment sources of potential and actual employment vacancies for referral of qualified applicants.	EEO & Recruitment Personnel	Complete and Ongoing	Review quarterly vacancy reports
Ensure interview panels are as diverse as practicable.	Recruitment Personnel	Complete and Ongoing	Review of hires and promotions by EEO Officer
Close underutilization in Official/Manager category for the Asian demographic – 1 Position.	Interviewing Officer	6/30/2025	Review of hires and promotions by EEO Officer
Close underutilization in Professional category for the Asian demographic – 1 Position.	Interviewing Officer	6/30/2025	Review of hires and promotions by EEO Officer

#### Recruitment Sources:

- Governor's Liaison to Asians & African Americans
- Statewide Illinois Worknet Offices
- CMS Diversity Enrichment Program
- DHR Speakers Bureau Job Fairs Team
- NAACP Springfield & Chicago
- Frontiers Organization
- Local Asian & African American Churches
- Local Colleges/Universities/Sororities

## Programmatic Goals

### Goal:

IDHR will maintain a diverse workforce representative of the population it serves.

### Objective:

Eliminate underutilization across specified demographic groups by maximizing the number and diversity of candidates applying for IDHR employment positions posted to [work.illinois.gov](https://work.illinois.gov).

Action Item	Assignment of Responsibility	Completion Target Date	Monitoring Procedure
Develop a comprehensive recruitment program for the advertising of open positions that reaches a diverse set of candidates for employment and equitably reaches underrepresented and underutilized candidates.	Recruitment Officer	06/30/2025	Monthly
Develop University/College recruitment program that reaches a diverse set of candidates for employment and equitably reaches underrepresented and underutilized candidates.	Recruitment Officer	06/30/2025	Monthly
Develop a recruitment outreach plan that develops partnerships with key stakeholders serving underrepresented and underutilized candidates for employment.	Recruitment Officer	06/30/2025	Monthly



## PART IV

### **Discrimination Complaint Reporting**

Any employee of the Department of Human Rights wishing to file a complaint alleging discrimination may contact one of the following without fear of reprisal:

#### **IDHR Equal Employment Opportunity Officer**

Martin Duncan  
Department of Human Rights 555  
W. Monroe Street, 7th Floor  
Chicago, IL 60661  
Telephone: 312-814-6204  
TTY: 866-740-3953  
[martin.duncan@illinois.gov](mailto:martin.duncan@illinois.gov)

#### **Equal Employment Opportunity Commission**

230 South Dearborn Street, Suite 1866  
Chicago, Illinois 60604  
Telephone: 312-353-2713  
TDD: 312-353-2421  
[eeoc.gov/field/chicago](http://eeoc.gov/field/chicago)

#### **Equal Employment Opportunity Commission**

1222 Spruce Street, Room 8-100 St.  
Louis, Missouri 63103 Telephone:  
314-539-7800  
TDD: 314-425-6547  
[eeoc.gov/field/stlouis](http://eeoc.gov/field/stlouis)

# **Discrimination Complaint Investigation Procedure**

## **A. Purposes**

In accordance with the Statement of Policy outlined in Part I of this Plan, the Department of Human Rights affirms its commitment to a policy of non-discrimination through the implementation of a Discrimination Complaint Investigation Procedure, which promotes the internal resolution of employee complaints of alleged discrimination. It is the conviction of this Agency that the establishment of this Discrimination Complaint Investigation procedure will provide an internal avenue of redress to informally resolve complaints of alleged discrimination at the lowest organizational level, reducing the backlog, delay, and expense of a prolonged formal complaint process.

To that end, supervisors and managers are responsible for the resolution of valid complaints of discrimination within their organization level. The EEO/AA Officer shall advise management and investigate complaints of discrimination, document facts, present findings, and make recommendations to resolve the dispute.

The use of this internal investigation procedure does not preclude the right of an employee to file a charge directly with the Equal Employment Opportunity Commission or any other appropriate agency. The filing of any complaint of alleged discrimination will not be used as a basis for future retaliation adversely affecting the rights of any employee.

## **B. Procedures**

Any complaint alleging discrimination shall be in writing and shall clearly indicate the date, nature, and other pertinent information of the complaint of alleged discrimination submitted to the EEO Officer for investigation. The attached Discrimination Form may be used.

### **1. Scope of Timeliness**

Unless of a continuing nature, all complaints must be received by the EEO officer in writing within thirty (30) working days of the date of the alleged discrimination. The scope of the investigation shall be restricted to the specific allegations cited in the charge.

### **2. Intake Screening**

Immediately upon receipt of a complaint, the EEO Officer shall review the complaint to determine the validity and thoroughness of the information submitted in the complaint.

The EEO Officer shall inform the employees in writing of the acceptance of the complaint for investigation within ten (10) working days of the receipt of the complaint. The complainant shall be promptly notified if further information or documentation is required to support the charge.

### **3. Investigation**

Within thirty (30) working days of the acceptance of the complaint, the EEO Officer shall initiate a thorough investigation of the allegation(s) of discrimination cited in the complaint. In order to document the merits of the charge, the investigation shall entail the verification of information with the immediate supervisor, staff and witnesses to the alleged discriminatory act. The investigation shall be concluded within sixty (60) working days after acceptance of the complaint.

#### **4. Withdrawal of Complaint**

The complaint , or any part of the complaint's allegation, may be withdrawn by the employee during the investigation of the complaint upon receipt by the EEO Officer of a written request for withdrawal by the employee .

#### **5. Adjustment During Investigation**

If, during the investigation of the complaint, a settlement is reached between the immediate supervisor and the employee, the settlement agreement shall be obtained in writing with the approval of line management before the complaint shall be considered closed by the EEO Officer.

#### **6. Dismissal of the Complaint**

If, after an analysis of the merits of the complaint, there is a lack of substantial evidence to believe that discrimination has occurred, the complainant shall be notified of the findings in writing, and informed of the right to appeal to the Director.

#### **7. Investigation Findings**

If, however, at the conclusion of the investigation, there exists reasonable cause to believe that discrimination may have occurred, the EEO Officer shall submit a written notice to the Director with the findings and recommendations to resolve the complaint. Within five (5) working days, conciliation efforts shall be initiated and the EEO Officer shall participate to seek an equitable resolution of the complaint.

#### **8. Conciliation Efforts**

The EEO Officer shall conduct and coordinate conciliation efforts by conferring with the parties in an attempt to secure a settlement. A conciliation conference may be convened, which all parties may attend in person or by representative, to propose, discuss, and agree to a resolution of the complaint.

If the complaint cannot be satisfactorily resolved at this level within five (5) working days, the EEO Officer shall document the efforts made to resolve the complaint and shall provide a written explanation of the reasons why the complaint was not able to be resolved.

The findings, conciliation efforts, and proposed settlement shall be forwarded to the Director for the final review, approval or other determination. The Director shall make known to the EEO Officer the final decision within ten (10) working days of the receipt of the EEO Officer's written report.

NOTE: An employee who files an internal complaint through the EEO Officer also has the right to file such complaint with the Equal Employment Opportunity Commission or any other appropriate agency, simultaneously.

The General Counsel shall represent the Agency in responding to any charges by the Equal Employment Opportunity Commission.

## **Director's Policy Statement on Sexual Harassment**

As Director of the Department of Human Rights, I am committed to providing a workplace that is free from sexual harassment. Any employee's behavior that fits the definition of sexual harassment will not be tolerated and may result in disciplinary action, up to and including dismissal.

The accompanying procedures defines sexual harassment, summarizes the rights and responsibilities of individual employees, describes the responsibility of supervisors in enforcing the policy, and outlines procedures for filing a complaint.

Full compliance with the policy by all employees in the agency is expected. Training on this sexual harassment policy will be a component of all ongoing training programs.



James L. Bennett, Director

## **Policy and Procedure on Sexual Harassment Discrimination**

### CHAPTER ONE, SECTION C:

#### ILLINOIS DEPARTMENT OF HUMAN RIGHTS POLICY AND PROCEDURE ON SEXUAL HARASSMENT DISCRIMINATION

It is the responsibility of each individual employee to refrain from sexual harassment, and it is the right of each individual employee to work in an environment free from sexual harassment.

#### **Definition of Sexual Harassment**

Sexual harassment is: Any unwelcome sexual advances or requests for sexual favors or any conduct of a sexual nature when;

- 1) submission to such conduct is made either explicitly or implicitly a term or condition of an individual's employment (Quid Pro Quo),
- 2) submission to or rejection of such conduct by an individual is used as the basis for employment decisions affecting such individual (Quid Pro Quo), or
- 3) such conduct has the purpose or effect of substantially interfering with an individual's work performance or creating an intimidating, hostile or offensive working environment (Hostile Work Environment).

Sexual harassment is a form of discrimination under Title VII of the U.S. Civil Rights Act of 1964, as amended in 1991, and the Illinois Human Rights Act.

An example is where an individual must submit to unwelcome sexual conduct to receive an employment opportunity.

Sexual harassment can be:

**Verbal:** Innuendos, suggestive comments, insults, humor and jokes about sex, anatomy – or gender-specific traits, inappropriate comments about an employee's clothing, propositions, threats, repeated requests for dates, or statements about other employees, even outside of their presence, of a sexual nature.

**Non-Verbal:** Suggestive or insulting sounds (whistling), leering, obscene gestures, sexually suggestive bodily gestures, "catcalls", "smacking" or "kissing" noises.

**Visual:** Posters, signs, pin-ups, or slogans of a sexual nature.

**Physical:** Unwelcome touching, hugging, or kissing, pinching, brushing the body; coerced sexual intercourse; or actual assault.

**Textual/Electronic:** “Sexting” (electronically sending messages with sexual content, including pictures and video), the use of sexually explicit language, harassment, cyberstalking, and threats via all forms of electronic communication (e-mail, text/picture/video messages, intranet/on-line postings, blogs, instant messages and social network websites like Facebook and Twitter).

Sexual harassment can occur regardless of the gender of the harasser or victim. It frequently involves a man harassing a woman. However, it may also involve a woman harassing a man or harassment between members of the same gender.

Individuals also have the right to a workplace free of sexual harassment by a “third party,” for example, a contractor, customer, sales representative, or repair person.

**Responsibility of Individual Employees:**

Each individual employee has the responsibility to refrain from sexual harassment in the workplace.

Employees who are found to have engaged in sexual harassment will be subject to disciplinary action up to and including discharge in accordance with departmental policy or a bargaining agreement, as appropriate.

All employees must complete, at least annually beginning in 2018, a sexual harassment training program and submit proof of completion to the agency’s Ethics Officer.

**Responsibility of Supervisory Personnel:**

Each supervisor is responsible for maintaining the workplace free of sexual harassment. This is accomplished by promoting a professional environment and by dealing with sexual harassment as with all other forms of employee misconduct.

A supervisor must take reasonable steps to address a complaint or an observed incident of sexual harassment, take prompt action to stop the harassment, and report it to the next level supervisor and/or EEO/AA Officer. In addition, supervisors must ensure that no retaliation will result against an employee making a sexual harassment complaint.

The EEO/AA Officer is available to consult with supervisors on the proper procedures to follow.

**Responsibility of Employee Who Observes or Experiences Sexual Harassment:**

An employee who either observes or believes herself/himself to be the object of sexual harassment should report the sexual harassment. An employee who believes to be the object of sexual harassment should also communicate her/his position to the offending employee.

The following steps are also encouraged: document or record each incident (what was said or done, the date, the time, and the place). Documentation can be strengthened by written records such as letters, notes, memos, and telephone messages. Include the names of any potential witnesses.

### **Procedures to Report Sexual Harassment:**

**Direct Communication:** If there is sexually harassing behavior in the workplace, the harassed employee should directly and clearly express her/his objection that the conduct is unwelcome and request that the offending behavior stop. The initial message may be verbal. If subsequent messages are needed, they should be put in writing.

**Contact Supervisory Personnel:** At the same time direct communication is undertaken, or in the event the employee feels threatened or intimidated by the situation, the problem should be promptly reported to the immediate supervisor, EEO/AA Officer or Ethics Officer. If the harasser is the immediate supervisor, the problem should be reported to the next level of supervision, the EEO/AA Officer, or the Ethics Officer.

The EEO/AA Officer or Ethics Officer is also available to answer any questions about sexual harassment even if an employee does not want to file a formal complaint.

**Formal Written Complaint/Investigation:** An employee may report incidents of sexual harassment directly to the EEO/AA Officer. The EEO/AA Officer will immediately begin the investigation process. If it is first reported to the supervisor, the supervisor will notify the EEO/AA Officer, who will in turn conduct the investigation. To protect the privacy of individuals involved, the investigation process, as well as any information related to the investigation, shall remain confidential.

Upon completion of the investigation the EEO/AA Officer will make a recommendation to the Director. If an investigation reveals that sexual harassment has occurred, appropriate corrective action will be taken against the offender.

**Resolution Outside IDHR:** Employees also have the right to contact the Equal Employment Opportunity Commission (EEOC) about filing a formal charge of discrimination. A charge with the EEOC must be filed within 300 days. An IDHR employee may file a charge with the IDHR; however, IDHR will refer the charge to EEOC for investigation to the extent possible. The Office of Executive Inspector General (OEIG) also accepts complaints of sexual harassment and other violations of the State Employees and Officials Ethics Act. An employee of IDHR can contact the OEIG directly or seek information and assistance from the IDHR Ethics Officer.

An employee who has been physically harassed or threatened while on the job may also have grounds for criminal charges of assault and/or battery.

## **Retaliation Prohibited**

Retaliation will not be tolerated against any employee who makes a good faith complaint of sexual harassment, reports sexual harassment, or testifies, participates, or assists in an investigation of sexual harassment. Complaints of retaliation should be brought to the attention of the IDHR EEO/AA Officer or the IDHR Ethics Officer. External charges of retaliation can be filed at the IDHR and EEOC, or with the OEIG under the whistleblower protections of the Ethics Act.

No one making a complaint will be retaliated against even if a complaint made in good faith is not substantiated.

## **False and/or Frivolous Complaints:**

False and/or frivolous charges refer to cases where the accuser is using a sexual harassment complaint to accomplish some end other than stopping sexual harassment. It does not refer to charges made in good faith, which cannot be proven. Given the seriousness of the consequences for the accused, a false and/or frivolous charge is a severe offense that can itself result in disciplinary action.

## **State of Illinois Code of Personal Conduct:**

The Illinois Code of Personal Conduct was prepared by the Illinois Department of Central Management Services, on behalf of the Governor, pursuant to Section IV of Executive Order 2016-04, and filed with the Executive Ethics Commission pursuant to Section 5-5(b) of the State Officials and Employees Ethics Act (5 ILCS 430). The Code of Personal Conduct also contains a prohibition on sexual harassment and any retaliatory conduct, as follows:

**Sexual Harassment:** A State Employee will work to ensure that his or her workplace is free from sexual harassment, which is prohibited. Sexual harassment means any unwelcome sexual advances, requests for sexual favors, or any conduct of a sexual nature when (1) submission to such conduct is made either explicitly or implicitly a term or condition of an individual's employment, (2) submission to or rejection of such conduct by an individual is used as the basis for employment decisions affecting such individual, or (3) such conduct has the purpose or effect of substantially interfering with an individual's work performance or creating an intimidating, hostile or offensive working environment.

Any State Employee who witnesses, is subjected to, or becomes aware of such conduct should immediately report the incident to his or her supervisor, Ethics Officer, or applicable State Agency Equal Opportunity Officer, or may make a confidential report to the Office of the Executive Inspector General or the Illinois Department of Human Rights. All complaints of sexual harassment will be investigated thoroughly, and appropriate action will be taken when warranted.



Consequences for a violation of the prohibition on sexual harassment or for intentionally making a false report can be found in the State Officials and Employees Ethics Act, 5 ILCS 430/50-5.

**Contact Information:**

**Martin Duncan, EEO/AA Officer**

Illinois Department of Human Rights  
555 W. Monroe St., 7th Floor  
Chicago, IL 60661  
Phone: (312) 814-6204  
martin.duncan@illinois.gov

**Betsey Madden, Chief Legal Counsel & Ethics Officer**

Illinois Department of Human Rights  
555 W. Monroe St., 7th Floor  
Chicago, IL 60661 60661  
Phone: (312) 814-3386  
betsey.m.madden@illinois.gov

**U.S. Equal Employment Opportunity Commission**

JCK Federal Building  
230 South Dearborn Street, Suite 1866  
Chicago, Illinois 60604  
Phone: (312) 353-2713  
Fax: (312) 353-2421  
TTY: (866) 740- 3953  
ASL Video Phone: (844) 234-5122

**Office of Executive Inspector General for the Agencies of the Illinois Governor**

69 West Washington Street	Illinois Building – 607 East Adams Street
Suite 3400	14th Floor
Chicago, IL 60602	Springfield, IL 62701
Phone: (312) 814-5600	Phone: (217) 558-5600
TTY: (888) 261-2734	Fax: (217) 782-1605
Fax: (312) 814-5479	

**Sexual Harassment and Discrimination Helpline**

Phone: 1-877-236-7703  
TTY: 711

## **Discrimination Complaint Form**

To: EEO / Affirmative Action Office

1. Name \_\_\_\_\_ Phone #: \_\_\_\_\_

Home Address: \_\_\_\_\_

2. Are you currently employed by the department? Yes \_\_\_\_\_ No \_\_\_\_\_

3. Indicate your present job title, status, work unit, address, phone number and length of service in your current title:

Job Title	Status	Unit
-----------	--------	------

Location	Phone	Length of Service
----------	-------	-------------------

4. Date of alleged discriminatory practice: \_\_\_\_\_

5. Basis of the alleged discriminatory practice:

\_\_\_\_\_ Sexual Orientation      \_\_\_\_\_ Transgender Status      \_\_\_\_\_ Race/Color

\_\_\_\_\_ Ancestry      \_\_\_\_\_ Disability      \_\_\_\_\_ Retaliation

\_\_\_\_\_ Sex      \_\_\_\_\_ Religion      \_\_\_\_\_ Age

\_\_\_\_\_ National Origin      \_\_\_\_\_ Other (Specify)

6. The discrimination occurred in connection with:

\_\_\_\_\_ Interview      \_\_\_\_\_ Downward Allocation      \_\_\_\_\_ Transfer

\_\_\_\_\_ Hiring Selection      \_\_\_\_\_ Disciplinary Action      \_\_\_\_\_ Lay Off

\_\_\_\_\_ Promotion      \_\_\_\_\_ Compensation      \_\_\_\_\_ Training Opportunity

\_\_\_\_\_ Other (specify): \_\_\_\_\_

7. The facts of the alleged discriminatory employment practice are: \_\_\_\_\_

\_\_\_\_\_

\_\_\_\_\_

(continue on additional sheets if necessary)

8. Name(s), Title(s), Work Location(s), and Telephone Number(s) of Person(s) who you believe discriminated against you. \_\_\_\_\_  
\_\_\_\_\_  
\_\_\_\_\_

9. Please supply supporting evidence to document the basis for the discriminatory practice you are claiming, as indicated in your response to Number 5 on the form. I have attached supporting evidence: \_\_\_\_Yes \_\_\_\_No If yes, describe attachments: \_\_\_\_\_  
\_\_\_\_\_  
\_\_\_\_\_

10. Have you made an effort to resolve the discrimination through your supervisors, the grievance procedure, or with any public or private organization? \_\_\_\_Yes \_\_\_\_ No  
If yes, please explain, indicating the outcome of the efforts: \_\_\_\_\_  
\_\_\_\_\_  
\_\_\_\_\_

(continue on additional sheets if necessary)

\_\_\_\_\_  
Complainant's Signature and Date Filed

\_\_\_\_\_  
EEO/AA Officer's Signature and Date Received

# PART V

## Designation of IDHR Americans with Disabilities Act Coordinator

### ADA COORDINATOR – INTERNAL

NAME: Oral R. Bennett

TITLE: Chief Litigation Attorney for Housing

ADDRESS: 555 W. Monroe St., 7th Flr., Chicago, IL 60661

TELEPHONE #: (312) 814-6492

TTY: (866) 740-3953

FAX #: (312) 814-1436

EMAIL: IDHR.ADAinternal@illinois.gov

### ADA COORDINATOR - EXTERNAL

TITLE: Technical Advisor Staff Attorneys

ADDRESS: 555 W. Monroe St., 7th Flr., Chicago, IL 60661

TELEPHONE: (312) 814-6262

TTY: (866) 740-3953

FAX#: (312) 814-1436

EMAIL: IDHR.ADA@illinois.gov

# **Affirmative Action Provisions for People with Disabilities**

## **Introduction**

The Department is required by state and federal law to provide equal employment opportunity for people with disabilities. The Americans with Disabilities Act, which for purposes of its employment title was effective July 26, 1992, prohibits discrimination against applicants and employees with disabilities. The Department's ADA Coordinator is: Oral Bennett, 555 W. Monroe St., 7th Floor, Chicago, IL 60661 (internal and external). Also, Section 504 of the Rehabilitation Act of 1973 prohibits discrimination by recipients of federal funds. The Department receives federal funding from the Equal Employment Opportunity Commission.

The Department is also covered by the Illinois Human Rights Act, which prohibits discrimination against applicants or employee with current disabilities, those with histories of disabilities, and those who are perceived to have disabilities. This Act also requires state executive agencies to practice affirmative action in regard to employment of persons with disabilities. As the enforcement agency under the Human Rights Act, the Department is committed to the practice of fair and equitable treatment of all employees with disabilities and affirmative action as required by the Department of Human Rights' rules on Equal Employment Opportunity and Affirmative Action. This part of the plan sets forth steps the agency will take to comply with these legislative and regulatory requirements. Although the plan is primarily concerned with employment-related issues, this part of the plan will also address the Department's policy and practice of providing services to people with disabilities in an accessible manner.

## **I. Number of Employees with Disabilities**

Employees wanting to identify their disabilities must complete the on-line Disability Survey Form by logging into OneNet. All new employees are required to login to this website and voluntary provide their disability information or indicate they do not have a disability. For those who choose not to fill out the on-line form they simply click the "Skip Survey" button to indicate receipt and acknowledgement that they elect not to participate in the survey. Employees are free to change their disability as the need arises. To do so, they would merely complete a new survey form.

**The Agency did not return any employees to work under the Alternative Employment Program in FY24.**

**Number of Employees with Disabilities 44**  
**Total Number of Employees 127**  
**Percentage of Employees with Disabilities 35%**

## **II. Pre-employment Inquiries/Physical Examinations**

### **A. Pre-Employment Inquiries**

The Department does not use any written inquiries of applicants regarding disabilities. In compliance with the Americans with Disabilities Act (ADA), no questions concerning an applicant's disability will be posed during an employment interview. Department managers have been informed of this policy. Managers are responsible for ensuring that interviewing officers within their divisions comply with this policy.

### **B. Physical Examinations**

The Department does not require any applicant for employment to undergo a physical examination.

## **III. Employment Criteria and Testing**

### **A. Employment Criteria**

The Department relies on employment criteria established by the Department of Central Management Services. Before any internal criteria are established, the agency EEO Officer will determine whether the criteria in question are job-related, and he/she has the authority to prevent the use of such criteria when they are not significantly related to job performance.

### **B. Employment Testing**

The Department conducts no employment testing of its own. In all cases, when testing is required of applicants, the Department of Central Management Services conducts such tests through the Accommodated Testing Program. The Accommodated Testing Program provides the following types of accommodations for applicants with disabilities:

1. Braille exams;
2. Reader and/or marker for the exam;
3. Certified American Sign Language interpreter;
4. Zoom Text;
5. High Contrast;
6. Closed-captioning; and
7. Extra Time.

## **Physical Access (ADA Compliance)**

### **A. Access Issues**

The Department's offices in the 535 W. Jefferson building in Springfield (Region 7), and the at 555 West Monroe Street, 7th Floor in Chicago (Region 1) are generally physically accessible to persons with disabilities.

It is the Department's policy to provide sign language interpreters for deaf clients who request them. Meetings and conferences sponsored by the Department are held in facilities that are accessible to people with disabilities.

### **B. Emergency Evacuation of Employees with Disabilities**

All new employees are given the opportunity (on the disability survey form) to identify their need for assistance in emergency evacuation. Vincent Stokes and Martin Duncan in the Chicago Office; any manager physically present in the Springfield Office are responsible for ensuring that appropriate assistance is provided to employees with disabilities during an evacuation. The EEO/AA Officer will check the disability survey report on a regular basis verifying the evacuation needs for the department and will as needed relay information regarding evacuation needs to the appropriate evacuation staff.

## **Labor Force Analysis for People with Disabilities**

Agency:	Department of Human Rights
Fiscal Year:	2025
TOTAL EMPLOYEES:	127
PERCENT OF PEOPLE WITH DISABILITIES	6.24%
LABOR FORCE NUMBER:	7
NUMBER OF EMPLOYEES WITH DISABILITIES IN THE AGENCY:	44
UNDERUTILIZATION/PARITY:	P

DHR 34-AAP (Rev. July 2024)

## **Director's Policy Statement on Reasonable Accommodation**

In compliance with the Americans with Disabilities Act of 1990 and the Illinois Human Rights Act, it is the policy of the Department of Human Rights to reasonably accommodate known physical or mental limitations of otherwise qualified applicants and employees with disabilities. The Department of Human Rights recognizes the rights of a qualified applicant or employee with a disability to request accommodation to the job application procedure and to any aspect of his or her subsequent employment with the agency.

It is the responsibility of the Department of Human Rights to provide accommodation to qualified applicants and employees with disabilities when such accommodation does not pose an undue hardship to the operation of the agency's business.

The agency's Equal Employment Opportunity Officer and Americans with Disabilities Act Coordinator can provide further information about the agency's policy in this area.



James L. Bennett, Director



## **Reasonable Accommodation Policy**

### **Section 1. Introduction**

A. The Americans with Disabilities Act of 1990, 42 U.S.C. 12101 et. seq. (ADA), prohibits discrimination against a qualified individual with a disability in regard to job application procedures, the hiring, advancement, or discharge of employees; employee compensation; job training; and other terms, conditions and privileges of employment. (Section 102(a))

B. An employer must make reasonable accommodations to the known physical or mental limitations of an otherwise qualified individual with a disability who is an applicant or employee, unless such covered entity has demonstrated that the accommodation would impose an undue hardship on the operation of the business of such covered entity. (Section 102(b)-(5) (A)). Each individual is responsible for initiating the request for reasonable accommodation, (unless the need for accommodation is obvious) if such individual believe such accommodation is required to enable them to perform the essential functions of the job.

C. The policy and procedures set forth herein are also intended to meet the requirements of the Illinois Human Rights Act, 775 ILCS 5/ 1-101 et. seq. and Section 504 of the Rehabilitation Act of 1973 29U.S.C.794, as well as the ADA.

### **Section 2. Policy**

A. In accordance with the laws and regulations of the Americans with Disabilities Act, it is the policy of the Department of Human Rights:

1. To inform employees and applicants (the term “employee” shall include “applicants and prospective employees”) about the agency’s policies and of the right to reasonable accommodations, and;

2. To provide and all such reasonable accommodations in the most cost effective manner available unless it would impose “undue hardship”;

B. This policy is intended to comply with the applicable laws and is not intended to create any legal or contractual rights or obligations.

## **Reasonable Accommodation Policy (continued)**

### **Section 3. Reasonable Accommodation**

**A.** Reasonable accommodation means modifications or adjustments to a job application process and the work environment that enables qualified applicants or employees to be considered for a position, to perform the essential functions of a position, and to enjoy equal benefits and privileges of employment. ADA regulations: 29C.F.R.1630.2(o) (1);

**B.** Reasonable accommodation may include, but is not limited to:

1. Making existing facilities used by employees readily accessible to and useable by individuals with disabilities;
2. Job restructuring; part-time or modified work schedules; reassignment to a vacant position; acquisition or modification of equipment or devices; appropriate adjustment or modification of examinations; training materials or policies; the provision of qualified readers or interpreters; and other similar accommodations for individuals with disabilities. Section 101(9) of the ADA.

**C.** The determination of which accommodation is appropriate in a particular situation will be made on a case by case basis and involve the employer and employee in a flexible, interactive process whereby the employee identifies the precise limitations imposed by the disability, and along with the employer explores potential accommodations that would overcome those limitations.

**NOTE:** The ADA permits employers to choose the accommodation, which is lowest in cost, if such accommodation provides similar result to a more costly accommodation.

**D.** Reasonable accommodations may be categorized in the following manner:

1. Restructuring/modifications accommodations, include, but are not limited to: job restructuring by removal of non-essential tasks, job modifications, rearrangement of office furniture, removal of desk drawers, flexible time to allow for transportation and/ or medical schedules, etc.;
2. Technological/accessibility accommodations include but are not limited to: dictating machines, voice activated equipment, push button telephone options, Telecommunications Device for the Deaf (TTY's), hand controls for dictating devices, speaker-phones, telephone amplifiers, typewriters, Braille typewriters, orthopedic desk chairs, and other adaptive office furniture, etc., as well as architectural modifications. Some types of accommodations need not be provided on individual basis if available at the work site and if used by two or more individuals and will not impede job performance;
3. Assistive care accommodations include the utilization of additional persons such as readers, drivers, interpreters, and attendants who specifically assist an individual in performing the essential duties of the job.

## **Reasonable Accommodation Policy (continued)**

### **Section 4. Undue Hardship**

**A.** “Undue hardship” means significant difficulty or expense in, or resulting from, the provision of the accommodation. It refers to any accommodation that would be unduly costly, extensive, substantial, or disruptive, or that would fundamentally alter the nature or operation of the business of the agency.

**B.** Whether an accommodation will impose an undue hardship must be analyzed on a case-by-case basis. Factors to be considered in determining whether an accommodation would impose undue hardship on the agency may include, but not be limited to: (1) the nature and net cost of the accommodation needed; (2) the overall appropriation of the agency with respect to the number of employees and number, type, and location of its facilities; (3) the type of operation or operations of the agency, including the composition, structure and functions of the workforce of such agency; and (4) the impact of the accommodation upon the operation of the facility, including the impact on the ability of other employees to be able to perform their duties and to conduct business.

**C.** A requested accommodation may be denied if it is unduly disruptive to other employees or to the functioning of the business of the agency. To demonstrate that the accommodation would be unduly disruptive, the disruption must result from the provision of the accommodation, not from the fears or prejudices of other employees toward the individual’s disability.

**D.** When an accommodation would cause undue hardship and it is something which the employee can provide himself or herself (equipment, furniture, software), the employee can bring the item into the office and use it. Employees should inform their supervisor of their intent to bring in equipment or furniture. Software must be approved by Information Services to ensure compatibility and protect against introduction of viruses.

## **Reasonable Accommodation Policy (continued)**

### **Section 5. Reasonable Accommodation Committee (“RAC”)**

- A. Purpose. The purpose of the RAC is to ensure the effective implementation of this policy.
- B. Committee Members:
  - 1. ADA Coordinator and EEO/AA Officer
  - 2. Deputy Director
  - 3. Office Manager
  - 4. Fiscal Officer
  - 5. Chief of Staff
- C. Duties:
  - 1. The RAC provides technical assistance to agency employees on technology, the ADA, Title V of the Rehabilitation Act, Accessibility standards and employee relations as it relates to requests or potential requests.
  - 2. The RAC will maintain documentation regarding RAC requests in order to:
    - i. Provide appropriate budget information and projected cost analysis for future budget cycles;
    - ii. Lend consistency to the system of the provision of accommodations and ensure non-discrimination in the treatment of employees;
    - iii. Ensure that requests are processed, and approved accommodations provided in a timely manner; and
    - iv. Provide reports on employee accommodations and costs to regulatory agencies.

## **Reasonable Accommodation Policy (continued)**

### **Section 6. Procedures for Processing Requests for Reasonable Accommodations for Employees**

The determination of reasonable accommodation for qualified employees who require such to overcome a physical or mental impairment in performance of job duties must be conducted at the request and with the consultation of the employee.

A person with a disability may be qualified for a certain job if the person satisfies the requisite skills, experience, education and other job-related requirements of the employment position, as set forth in a standardized Department of Central Management Services requirement, and with or without reasonable accommodations can perform the essential functions of the job.

Essential job functions vary with individual job descriptions and would include those physical, mental and inter-personal activities necessary to achieve the anticipated job performance effectively.

A determination as to a reasonable accommodation for one person will not be treated as a precedent for another person.

The following procedures should be used in processing reasonable accommodation requests from employees.

1. An employee may request an accommodation orally or in writing. The employee will be asked to complete a Reasonable Accommodation Request form. The employee is responsible for adequately responding to all applicable questions on the form. Once completed, the form shall be transmitted by the employee to the ADA Coordinator or his/her designee. This form may be obtained from the EEO/AA Officer or via the department's website.

If requested by management, the employee shall submit medical documentation to support the need for accommodation. Also, if additional information becomes available, the employee should submit it in writing to the ADA Coordinator or his/her designee. Technical assistance is available to the employee and supervisor from the ADA Coordinator upon request.

2. Unless the appropriate reasonable accommodations is so obvious to either or both the agency and the qualified individual with a disability, all reviewers using a problem solving approach, will:
  - a) Analyze the particular job involved and determine its purpose and essential functions;
  - b) Consult with the individual with a disability to ascertain the precise job-related limitations imposed by the individual's disability and how those limitations could be overcome with a reasonable accommodation;
  - c) In consultation with the individual to be accommodated, identify potential accommodations and assess the effectiveness each would have in enabling the individual to perform the essential functions of the position; and

## **Reasonable Accommodation Policy (continued)**

- d) Consider the preference of the individual to be accommodated and select and implement the accommodation that is most appropriate for both the employee and the agency.
  - e) All reviewers shall consider the request based on the following criteria; (1) the relationship between the accommodation and essential job functions; (2) necessity; (3) cost effectiveness; (4) undue hardship; and (5) compatibility with existing equipment, where applicable.
3. The ADA Coordinator shall have five (5) working days to provide a recommendation on the request, given sufficient medical documentation has been provided by the employee to make a recommendation. If insufficient documentation, an incomplete form or additional medical documentation is necessary, then the five-day period will be tolled until such time as sufficient documentation, a completed form or additional medical documentation is presented. The ADA Coordinator will submit the recommendation to the Reasonable Accommodation Committee.
  4. Within five (5) working days, the RAC/EEO Officer will act upon the request and report recommendations to the Director.
  5. Within 30 days of receipt of the completed request, provided that appropriate medical documentation has been submitted, the agency shall inform the employee in writing of the decision to grant or deny the request. The Director will make the final decision. A copy of the Director's decision and the RAC/EEO Officer's recommendation will also be sent to the supervisor/manager, who will coordinate implementing the approved request with appropriate staff.
  6. If the accommodation is granted, the employee shall be apprised in writing of the status of the purchase or implementation of the request on a monthly basis.
  7. Approved accommodation requests shall be implemented within six months of receipt of the request, barring any extenuating circumstances.

### **Section 7. Reconsideration**

If the accommodation request is denied, the employee has the right to ask for a review of the decision by the EEO/AA Officer within ten (10) working days of notification of the decision. The EEO/AA Officer shall review all aspects of the request, including but not limited to, the need for accommodation, the resulting job enhancement, cost, medical documentation and doctor's recommendation. After a complete review of the matter, the EEO/AA Officer shall make a recommendation to the agency Director. A decision shall be made and the employee notified within ten (10) working days of receipt of request.

The Director's decision shall constitute the final administrative action of the agency on the request.

## **Reasonable Accommodation Policy (continued)**

### **Section 8. Denial**

An employee who has been denied accommodation has the right to file a complaint at the state level with the Illinois Department of Human Rights within 300 days of the denial of the request. An employee also has the right to file a complaint with the U.S. Equal Employment Commission, within 300 days of the denial of the request.

The agency should document any action taken on a reasonable accommodation request where indicated on the request form and shall retain completed accommodation request forms one year following final action in the matter.

### **Section 9. Implementation**

When implementing the approved request, the appropriate supervisor shall:

1. If the requested accommodation is within the restructuring or modification category, modify/restructure the job with assistance from the manager. When the supervisor, ADA Coordinator, and employee are all in agreement, the supervisor shall provide the accommodation; or
2. If the requested accommodation is of a technological/accessibility or assistive care nature, the appropriate supervisor and the office manager will coordinate purchase of equipment or devices, or initiate contracts.

## **Accommodation Request Procedures for Applicants**

Qualified applicants and employees with disabilities have the right to request reasonable accommodation under the law. Applicants may request accommodation at any stage of the application process, including the employment application, examination procedure, or interviewing process. Once an individual with a disability has been hired, he or she has the right to request accommodation at the work site, work schedule or work process that would enable him or her to perform the job in question. The following procedures are for applicants requesting an accommodation.

### **Procedures**

1. Applicants may request accommodations to the application process orally or in writing (either through correspondence or the use of the accommodation request form for applicants). If the request is made orally or through written correspondence, the agency EEO/AA Officer will complete accommodation request forms in the matter for purposes of processing and documenting the request.
2. Applicants shall submit accommodation requests to the interviewing officer, with a copy to the EEO/AA Officer. In cases where the EEO/AA Officer completes the form for the applicant, with a disability the EEO/AA Officer shall submit completed forms to the interviewing officer and retain a copy for the files.
3. The interviewing officer will provide a response to the request to the applicant within five days following receipt of the request.
4. If it is within the bounds of the authority of the interviewing officer to grant the request and he or she believes it to be reasonable, the accommodation will be provided. Information regarding the type of accommodation provided will be sent to the EEO/AA Officer.
5. If another official within the agency must be consulted in order for the accommodation to be provided, he or she will determine whether the agency will grant the request.
6. If the agency denies the request, the applicant has the right to file an internal complaint with the EEO/AA Officer and an external complaint with the Illinois Department of Human Rights within 300 days of the denial. He or she can also file with the U.S. Employment Opportunity Commission within 300 days of the denial.



## **Part VI**

### **List of Applicable EEO Laws**

1. Civil Rights Act of 1964, as amended.
2. Equal Employment Opportunity Act of 1972
3. Civil Rights Act of 1991
4. Age Discrimination in Employment Act of 1967
5. Rehabilitation Act of 1973.
6. Equal Pay Act of 1963
7. Americans with Disabilities Act of 1990
8. Family Medical Leave Act
9. Uniformed Services Employment and Reemployment Rights Act
10. GINA – Genetic Information Nondiscrimination Act of 2008

### **Description of Applicable EEO Laws**

#### **FEDERAL EEO LAWS**

##### **CIVIL RIGHTS ACT OF 1964, as amended**

Title VI prohibits discrimination on grounds of race, color, or national origin in federally assisted programs.

Title VII prohibits discrimination on the grounds of race, color, religion, sex or national origin by employers or unions with 15 or more employees. The designation employer includes the government of the United States, corporations wholly owned by the United States, and state or political subdivisions thereof.

##### **EQUAL EMPLOYMENT OPPORTUNITY ACT OF 1972**

This is an amendment to the Civil Rights Act of 1964, which adds sex and religion to the Title VII portion and extends Equal Employment Opportunity (EEO) to state, local and municipal organizations, all employment agencies (private and public) and to labor organizations. This Act empowers EEOC to bring civil action against any organization, which is alleged to be practicing discrimination. The Act also gives the right to an individual to take a complaint directly to a court of law.

##### **CIVIL RIGHTS ACT OF 1991**

The Civil Rights Act of 1991 expands the protections afforded individuals under the Civil Rights Act of 1964. It provides for damages for intentional discrimination and unlawful harassment in the workplace and codifies the concepts of “business necessity” and “job related” as enunciated in various Supreme Court decisions. Additionally, it confirms statutory authority and provides guidelines for disparate impact suits under Title VII of the Civil Rights Act of 1964 and in response to recent Supreme Court decisions, expands the scope of relevant civil rights statutes.

##### **AGE DISCRIMINATION IN EMPLOYMENT ACT OF 1967**

This Act prohibits arbitrary discrimination against persons 40 years of age or older.

### **REHABILITATION ACT OF 1973**

This Act sets the standards for promoting, expanding, and assisting in employment opportunities for the handicapped in all programs or activities receiving Federal financial assistance. Sections 503 and 504 provide for the prohibition of discrimination against qualified handicapped individuals. The Office of Federal Contract Compliance Programs (OFCCP), U. S. Department of Labor, enforces section 503. Section 504 is enforced by the agency providing the federal funds in question.

### **EQUAL PAY ACT OF 1963**

This Act provides that an employer may not discriminate on the basis of sex by paying employees different wages for doing equal work on jobs requiring equal skill, effort, and responsibility, and which are performed under similar working conditions in the same establishment. The U. S. Equal Employment Opportunity Commission (EEOC) enforces this Act. The standards of “equal pay for equal work” set forth in this Act for determining what is lawful discrimination in compensation are applicable to Title VII of the Civil Rights Act of 1964.

### **AMERICANS WITH DISABILITIES ACT OF 1990**

Congress enacted the Americans with Disabilities Act of 1990 (“the ADA”) to eliminate discrimination against individuals with disabilities in the areas of employment, public accommodations, education, transportation, communication, recreation, institutionalization, health services, voting, and access to public service. Title I of the ADA prohibits discrimination in employment against individuals with disabilities and establishes the standards governing an employer’s affirmative duty to accommodate an individual with a disability. Title II of the ADA prohibits discrimination against individuals with disabilities by state and local governments. The ADA Amendments Act of 2009 broadens the coverage of “disability” and thereby brings more individuals under the protection of the law. EEOC will issue new regulations under this Act.

### **FAMILY MEDICAL LEAVE ACT of 1993**

This act requires employers to provide up to 12 weeks of unpaid job-protected leave to “eligible” employees for certain family and medical reasons. Employees are eligible if they have worked for a covered employer for at least one year, and for 1,250 hours during the year preceding the start of the leave and be employed at a worksite where the employer employs at least 50 employees within a 75-mile radius. The U. S. Department of Labor’s Wage and Hour Division is authorized to investigate and resolve complaints of violations. Unpaid leave must be granted for any of the following reasons:

- To care for the employee’s child after birth, or placement for adoption or foster care;
- To care for the employee’s spouse, son or daughter, or parent, who has a serious health condition; or
- For a serious health condition that makes the employee unable to perform the employee’s job.

Section 585(a) of the National Defense Authorization Act (NDAA) amended the FMLA to provide eligible employees working for covered employers two important leave rights related to military service:

**Qualifying Reason for Leave.** Eligible employees are entitled to up to 12 weeks of leave because of “any qualifying exigency” arising out of the fact that the spouse, son, daughter, or parent of the employee is on active duty, or has been notified of an impending call to active duty status, in support of a contingency operation.

**Leave Entitlement.** An eligible employee who is the spouse, son, daughter, parent, or next of kin of a covered service member who is recovering from a serious illness or injury sustained in the line of duty on active duty is entitled to up to 26 weeks of leave in a single 12-month period to care for the service member. This military caregiver leave is available during “a single 12-month period” during which an eligible employee is entitled to a combined total of 26 weeks of all types of FMLA leave.

#### **UNIFORMED SERVICES EMPLOYMENT AND REEMPLOYMENT RIGHTS ACT (USERRA)**

USERRA protects the job rights of individuals who voluntarily or involuntarily leave employment positions to undertake military service. USERRA also prohibits employers from discriminating against past and present members of the uniformed services, and applicants to the uniformed services. The U. S. Department of Labor, Veterans Employment and Training Service (VETS) is authorized to investigate and resolve complaints of USERRA violations.

#### **GENETIC INFORMATION NONDISCRIMINATION ACT OF 2008 (GINA)**

Under Title II of GINA, it is illegal to discriminate against employees or applicants because of genetic information. Title II of GINA prohibits the use of genetic information in making employment decisions, restricts employers and other entities covered by Title II (employment agencies, labor organizations and joint labor-management training and apprenticeship programs – referred to as “covered entities”) from requesting or purchasing genetic information, and strictly limits the disclosure of genetic information.

#### **PREGNANCY DISCRIMINATION ACT**

This law amended Title VII to make it illegal to discriminate against a woman because of pregnancy, childbirth, or a medical condition related to pregnancy or childbirth. The law also makes it illegal to retaliate against a person because the person complained about discrimination, filed a charge of discrimination, or participated in an employment discrimination investigation or lawsuit.

## Part VII

### HIRING MONITOR

Name of Agency: \_\_\_\_\_ Candidate's Name: \_\_\_\_\_  
City / County: \_\_\_\_\_ Position Number: \_\_\_\_\_  
IDHR Region / (Facility): \_\_\_\_\_  
EEO Job Category: \_\_\_\_\_ Bid Number: \_\_\_\_\_  
Title of Job to be filled: \_\_\_\_\_ Date of Hire: \_\_\_\_\_

1. Is the EEO category underutilized? No  If yes, indicate number for each group:  
Women: \_\_\_\_\_ Black or African American: \_\_\_\_\_ Hispanic or Latino: \_\_\_\_\_  
Asian: \_\_\_\_\_ American Indian or Alaskan Native: \_\_\_\_\_  
Native Hawaiian or Other Pacific Islander: \_\_\_\_\_ People with Disabilities: \_\_\_\_\_

2. Indicate: Race of person selected: (Choose One)   
Sex: (Choose One)  Veteran: Yes  Disability: Yes

3. Number of individuals who applied or were on the list of eligible(s)

Total by Category	# Invited	# Interviewed	# Selected
Women	_____	_____	_____
Black or African American	_____	_____	_____
Hispanic or Latino	_____	_____	_____
Asian	_____	_____	_____
American Indian or Alaskan Native	_____	_____	_____
Native Hawaiian or Other Pacific Islander	_____	_____	_____
People with Disabilities	_____	_____	_____
Veterans	_____	_____	_____

4. If no candidates from any of the underutilized groups appeared on the list, what efforts were made in the last six months to assist in the recruitment of candidates?

5. If the category is underutilized and a member of an affirmative action group applied and was not hired, give a detailed explanation for the hiring decision.

6. Was the position posted? Yes

7. Name and position of person(s) who interviewed candidates.

8. Name and position of person(s) who recommended the selection of the candidate.

I have reviewed the eligibility list and: (Choose One)  with this hire. Remarks on reverse side.

\_\_\_\_\_  
EEO/AA Officer Date

I approve of this hire

\_\_\_\_\_  
Chief Executive Officer Date

No appointment will be processed without this form. [DHR Rules and Regulations Section 2520.770(h)]

## PROMOTION MONITOR

Name of Agency \_\_\_\_\_  
City / County \_\_\_\_\_  
IDHR Region / (Facility) \_\_\_\_\_  
EEO Job Category \_\_\_\_\_  
Title of Job to be filled \_\_\_\_\_

Candidate's Name \_\_\_\_\_  
Position Number \_\_\_\_\_  
Bid Number \_\_\_\_\_  
Date of Promotion \_\_\_\_\_

1. Is this EEO Category underutilized? Yes \_\_\_\_\_ No \_\_\_\_\_  
If yes, by which of the following:  
Women \_\_\_\_\_ Black or African American \_\_\_\_\_  
Hispanic or Latino \_\_\_\_\_  
Asian \_\_\_\_\_ American Indian or Alaskan Native \_\_\_\_\_  
Native Hawaiian or Other Pacific Islander \_\_\_\_\_  
People with Disabilities\* \_\_\_\_\_

2. Indicate the race and sex of the person promoted: \_\_\_\_\_

3. Number of individuals who applied or were on the list of promotable(s) \_\_\_\_\_

Total by Category	# Invited	# Interviewed	# Selected
_____ Women	_____	_____	_____
_____ Black or African American	_____	_____	_____
_____ Hispanic or Latino	_____	_____	_____
_____ Asian	_____	_____	_____
_____ American Indian or Alaskan Native	_____	_____	_____
_____ Native Hawaiian or Other Pacific Islander	_____	_____	_____
_____ People with Disabilities	_____	_____	_____
_____ Veterans	_____	_____	_____

4. Did it change the employee's EEO Job Category? Yes \_\_\_\_\_ No \_\_\_\_\_

If yes, from what EEO Job Category? \_\_\_\_\_

5. If the category is underutilized and a member of an affirmative action group applied and was not promoted give a detailed explanation.

6. Was the position posted? Yes \_\_\_\_\_ No \_\_\_\_\_

7. Name and position of person(s) who interviewed candidates.

8. Name and position of person(s) who recommended the selection of the candidate.

I have reviewed the eligibility list and concur / do not concur with this promotion. Remarks on reverse side.

\_\_\_\_\_  
EEO/AA Officer Date

I approve of this promotion.

\_\_\_\_\_  
Chief Executive Officer Date

No appointment will be processed without this form. [DHR Rules and Regulations Section 2520.770(h)]

DHR-20 (Rev. Feb. 2016)

**\*For EEO Monitoring purposes.**

## **Exit Questionnaire**

Instructions: This questionnaire will be provided to all employees at the time of their separation from the agency whether voluntary or involuntary. The completion of this questionnaire shall be at the employee's option. Please send the completed form in an envelope to the Equal Employment Opportunity Officer. The Equal Employment Opportunity Officer shall maintain a separate file of all forms for possible review by the Department of Human Rights.

Name: \_\_\_\_\_ Sex: Male \_\_\_ Female \_\_\_ Other \_\_\_ Age: \_\_\_

Disability: \_\_\_\_\_ Race: \_\_\_\_\_ Hispanic: Yes \_\_\_ No \_\_\_

Date of Employment: \_\_\_\_\_ Separation Date: \_\_\_\_\_

Position Title: \_\_\_\_\_

Starting Salary: \_\_\_\_\_ Current Salary: \_\_\_\_\_

Who was your immediate supervisor? \_\_\_\_\_

Reason for leaving: \_\_\_\_\_

\_\_\_\_\_

Were you terminated while still in your probationary period? Yes \_\_\_ No \_\_\_

If so, what could your agency have done to ensure you successfully met your probationary period resulting in certification? \_\_\_\_\_

\_\_\_\_\_

\_\_\_\_\_

Would you want to work here again? Yes \_\_\_ No \_\_\_

Explain: \_\_\_\_\_

\_\_\_\_\_

Same Position? Yes \_\_\_ No \_\_\_

Explain: \_\_\_\_\_

\_\_\_\_\_

Same Supervisor? Yes \_\_\_ No \_\_\_

Explain: \_\_\_\_\_

\_\_\_\_\_

Do you feel working conditions were satisfactory? Yes \_\_\_\_ No \_\_\_\_

Explain: \_\_\_\_\_  
\_\_\_\_\_

Do you have any suggestions for improving employee morale? Yes \_\_\_\_ No \_\_\_\_

Explain: \_\_\_\_\_  
\_\_\_\_\_

Were you satisfied with the pay you received for the work performed and with promotions?  
Yes \_\_\_\_ No \_\_\_\_ Explain: \_\_\_\_\_

\_\_\_\_\_

Did you receive bilingual pay? Yes \_\_\_\_ No \_\_\_\_ If so, do you feel it was an appropriate  
amount? Explain: \_\_\_\_\_

\_\_\_\_\_

Were you satisfied with the supervision and were you trained properly? Yes \_\_\_\_ No \_\_\_\_

Explain: \_\_\_\_\_  
\_\_\_\_\_

Do you think management adequately recognized employee contributions? Yes \_\_\_\_ No \_\_\_\_  
If not, what recommendations would you make to improve this?

Explain: \_\_\_\_\_  
\_\_\_\_\_

Did you receive any equal employment opportunity / affirmative action orientation?  
Yes \_\_\_\_ No \_\_\_\_ Explain: \_\_\_\_\_

\_\_\_\_\_

During your employment did you request an accommodation based on your disability?  
Yes \_\_\_\_ No \_\_\_\_ N/A \_\_\_\_ Explain: \_\_\_\_\_

\_\_\_\_\_

Did you personally experience any discrimination while working in your position?

Yes \_\_\_\_ No \_\_\_\_ Explain: \_\_\_\_\_  
\_\_\_\_\_  
\_\_\_\_\_

Are you aware of instances where others have been discriminated against? Yes \_\_\_\_ No \_\_\_\_

Explain: \_\_\_\_\_  
\_\_\_\_\_

If you have answered 'Yes' to the last two questions, have you discussed or given written notice of this discrimination to your supervisor or EEO/AA Officer? Yes \_\_\_\_ No \_\_\_\_

Explain: \_\_\_\_\_  
\_\_\_\_\_  
\_\_\_\_\_  
\_\_\_\_\_  
\_\_\_\_\_

Additional comments / concerns:

\_\_\_\_\_  
\_\_\_\_\_  
\_\_\_\_\_  
\_\_\_\_\_  
\_\_\_\_\_  
\_\_\_\_\_

Employee Signature: \_\_\_\_\_ Date: \_\_\_\_\_



